

Unirain P35

Part Circle Impact Sprinkler

Low and Medium Flow Brass



Application

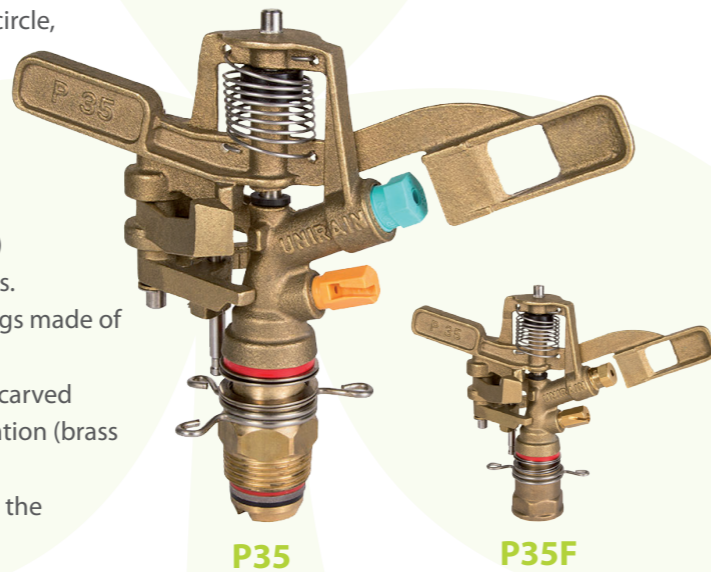
For agricultural use with medium flows, it has a sand-proof bearing system and can be assembled with one or two nozzles. High resistance with a compact design, its reversing system allows it to be changed in seconds into a full circle sprinkler. Suitable for areas bordering or near elements that should not get wet.

Advantages

- Made of brass, its arm and body share a wide impact area that provides longer life.
- Its counterweighted arm will provide a steady turn speed.
- Its exclusive reversing system is also sand-proof and can be easily disassembled for cleaning or maintenance when needed.
- It can be assembled with one or two nozzles.
- Three different vanes can be used to achieve the desired coverage and spray balance according to the available system pressure.

Technical specifications

- Double use impact sprinkler: 30° to 300° part circle, or full circle.
- 3/4" base thread male.
- Main and secondary nozzle
- 25° nozzle trajectory angle.
- Pressure range: 1.38 - 5.52 Bar
- Nozzle range: 9/64" (3,57mm) - 7/32" (5,56mm)
- Body, arm and bearing assembly made of brass.
- Fulcrum pin and cams, reversing pin and springs made of stainless steel.
- Color-coded anti abrasive acetal resin nozzles carved in millimetres and inches for a better identification (brass nozzles to be optionally assembled).
- Backturn lock between the sprinkler body and the bearing spring.



	Pressure (bar)	Nozzles	Vaness
HIGH	4.14	3PRN ó 3FCN	30V
MEDIUM	2.76	3PRN ó 3FCN	WITHOUT VANE
LOW	2.10	3PRN	30RV
VERY LOW	1.38	3PRN	30BV



P35	PRESSURE (Bar)	NOZZLES 9/64" + 3/32"		NOZZLES 5/32" + 3/32"		NOZZLES 11/64" + 3/32"		NOZZLES 3/16" + 3/32"		NOZZLES 3/16" + 1/8"		NOZZLES 13/64" + 1/8"		NOZZLES 7/32" + 1/8"	
		L/H	R(m)	L/H	R(m)	L/H	R(m)	L/H	R(m)	L/H	R(m)	L/H	R(m)	L/H	R(m)
TWO NOZZLES	1.38					1126	12.2	1285	12.4	1511	12.4	1697	12.5	1892	12.6
	1.72			1097	12.5	1261	12.6	1433	13.0	1681	13.0	1885	13.1	2101	13.4
	2.07			1199	13.0	1379	13.4	1574	13.9	1851	13.9	2078	14.3	2317	14.6
	2.41	1124	12.5	1297	13.3	1492	13.7	1706	14.3	2005	14.3	2255	14.8	2521	15.2
	2.76	1201	12.6	1388	13.4	1597	14.0	1824	14.6	2149	14.6	2419	15.1	2703	15.5
	3.10	1274	12.8	1472	13.6	1694	14.3	1937	14.9	2283	14.9	2566	15.4	2873	15.8
	3.45	1342	13.0	1549	13.7	1787	14.5	2044	15.2	2407	15.2	2703	15.7	3032	16.2
	3.79	1408	13.1	1624	13.9	1874	14.6	2146	15.4	2521	15.4	2839	15.8	3180	16.3
	4.14	1472	13.3	1697	14.0	1953	14.8	2239	15.5	2635	15.5	2953	16.0	3293	16.5
	4.48	1533	13.4	1767	14.2	2028	14.9	2333	15.7	2748	15.7	3066	16.2	3407	16.6
	4.83	1590	13.6	1835	14.3	2101	15.1	2421	15.8	2839	15.8	3180	16.3	3509	16.8
	5.17	1647	13.7	1901	14.5	2171	15.2	2503	16.0	2930	16.0	3271	16.5	3611	16.9
5.52	1701	13.9	1965	14.6	2242	15.4	2580	16.2	3009	16.2	3361	16.6	3702	17.1	

P35P	PRESSURE (Bar)	NOZZLES 9/64"		NOZZLES 5/32"		NOZZLES 11/64"		NOZZLES 3/16"		NOZZLES 13/64"		NOZZLES 7/32"	
		L/H	R(m)	L/H	R(m)	L/H	R(m)	L/H	R(m)	L/H	R(m)	L/H	R(m)
ONE NOZZLE AND PLUG	1.38					861	12.2	1020	12.4	1205	12.5	1400	12.6
	1.72			799	12.5	963	12.6	1136	13.0	1340	13.1	1556	13.4
	2.07			874	13.0	1054	13.4	1249	13.9	1476	14.3	1715	14.6
	2.41	772	12.5	945	13.3	1140	13.7	1354	14.3	1601	14.8	1862	15.2
	2.76	827	12.6	1011	13.4	1220	14.0	1449	14.6	1715	15.1	1999	15.5
	3.10	877	12.8	1072	13.6	1295	14.3	1540	14.9	1817	15.4	2124	15.8
	3.45	924	13.0	1131	13.7	1365	14.5	1626	15.2	1919	15.7	2248	16.2
	3.79	970	13.1	1186	13.9	1431	14.6	1708	15.4	2010	15.8	2362	16.3
	4.14	1013	13.3	1238	14.0	1492	14.8	1783	15.5	2101	16.0	2442	16.5
	4.48	1056	13.4	1290	14.2	1551	14.9	1858	15.7	2180	16.2	2521	16.6
	4.83	1097	13.6	1340	14.3	1610	15.1	1931	15.8	2260	16.3	2589	16.8
	5.17	1136	13.7	1388	14.5	1667	15.2	1999	16.0	2328	16.5	2657	16.9
5.52	1174	13.9	1431	14.6	1722	15.4	2065	16.2	2385	16.6	2725	17.1	

P35V	PRESSURE (Bar)	NOZZLES 9/64" + 3/32"		NOZZLES 5/32" + 3/32"		NOZZLES 11/64" + 3/32"		NOZZLES 3/16" + 3/32"		NOZZLES 3/16" + 1/8"		NOZZLES 13/64" + 1/8"		NOZZLES 7/32" + 1/8"	
		L/H	R(m)	L/H	R(m)	L/H	R(m)	L/H	R(m)	L/H	R(m)	L/H	R(m)	L/H	R(m)
TWO NOZZLES AND VANE TO HIGH RANGE	2.41	1124	13.5	1298	14.1	1494	14.5	1706	15.1	2010	15.1	2263	15.7	2528	16.0
	2.76	1201	13.9	1388	14.3	1597	14.6	1824	15.4	2149	15.4	2419	16.0	2703	16.2
	3.10	1274	14.0	1472	14.6	1694	14.9	1937	15.8	2283	15.8	2566	16.2	2873	16.5
	3.45	1342	14.2	1549	14.9	1787	15.2	2044	16.2	2407	16.2	2703	16.3	3032	16.8
	3.79	1408	14.3	1624	15.3	1874	15.5	2146	16.5	2521	16.5	2839	16.5	3180	17.1
	4.14	1472	14.5	1697	15.4	1953	15.7	2239	16.6	2635	16.6	2953	16.8	3293	17.4
	4.48	1533	14.6	1767	15.5	2028	15.8	2333	16.8	2748	16.8	3066	17.1	3407	17.7
	4.83	1590	14.8	1835	15.7	2101	16.2	2421	16.9	2839	16.9	3180	17.4	3509	18.0
	5.17	1647	14.9	1901	15.8	2171	16.5	2503	17.1	2930	17.1	3271	17.7	3611	18.3
	5.52	1701	15.2	1965	16.0	2242	16.8	2580	17.2	3009	17.2	3361	18.0	3702	18.6

P35PV	PRESSURE (Bar)	NOZZLES 9/64"		NOZZLES 5/32"		NOZZLES 11/64"		NOZZLES 3/16"		NOZZLES 13/64"		NOZZLES 7/32"	
		L/H	R(m)	L/H	R(m)	L/H	R(m)	L/H	R(m)	L/H	R(m)	L/H	R(m)
ONE NOZZLE, PLUG AND VANE TO HIGH RANGE	2.41	772	13.5	945	14.1	1140	14.5	1354	15.1	1601	15.7	1862	16.0
	2.76	827	13.9	1011	14.3	1220	14.6	1449	15.4	1715	16.0	1999	16.2
	3.10	877	14.0	1072	14.6	1295	14.9	1540	15.8	1817	16.2	2124	16.5
	3.45	924	14.2	1131	14.9	1365	15.2	1626	16.2	1919	16.3	2248	16.8
	3.79	970	14.3	1186	15.3	1431	15.5	1708	16.5	2010	16.5	2362	17.1
	4.14	1013	14.5	1238	15.4	1492	15.7	1783	16.6	2101	16.8	2442	17.4
	4.48	1056	14.6	1290	15.5	1551	15.8	1858	16.8	2180	17.1	2521	17.7
	4.83	1097	14.8	1340	15.7	1610	16.2	1931	16.9	2260	17.4	2589	18.0
	5.17	1136	14.9	1388	15.8	1667	16.5	1999	17.1	2328	17.7	2657	18.3
	5.52	1174	15.2	1431	16.0	1722	16.8	2065	17.2	2385	18.0	2725	18.6

Data obtained under ideal test conditions. It can be affected by wind, bad hydraulic conditions or other adverse factors. Highest point of the jet above the nozzle: 2.8 m (using standard nozzle 5 / 32 "to 3.45 Bar) Throw radius jets achieved with the 0.9m lift. Shaded areas not recommended. (*) Standard Nozzle.

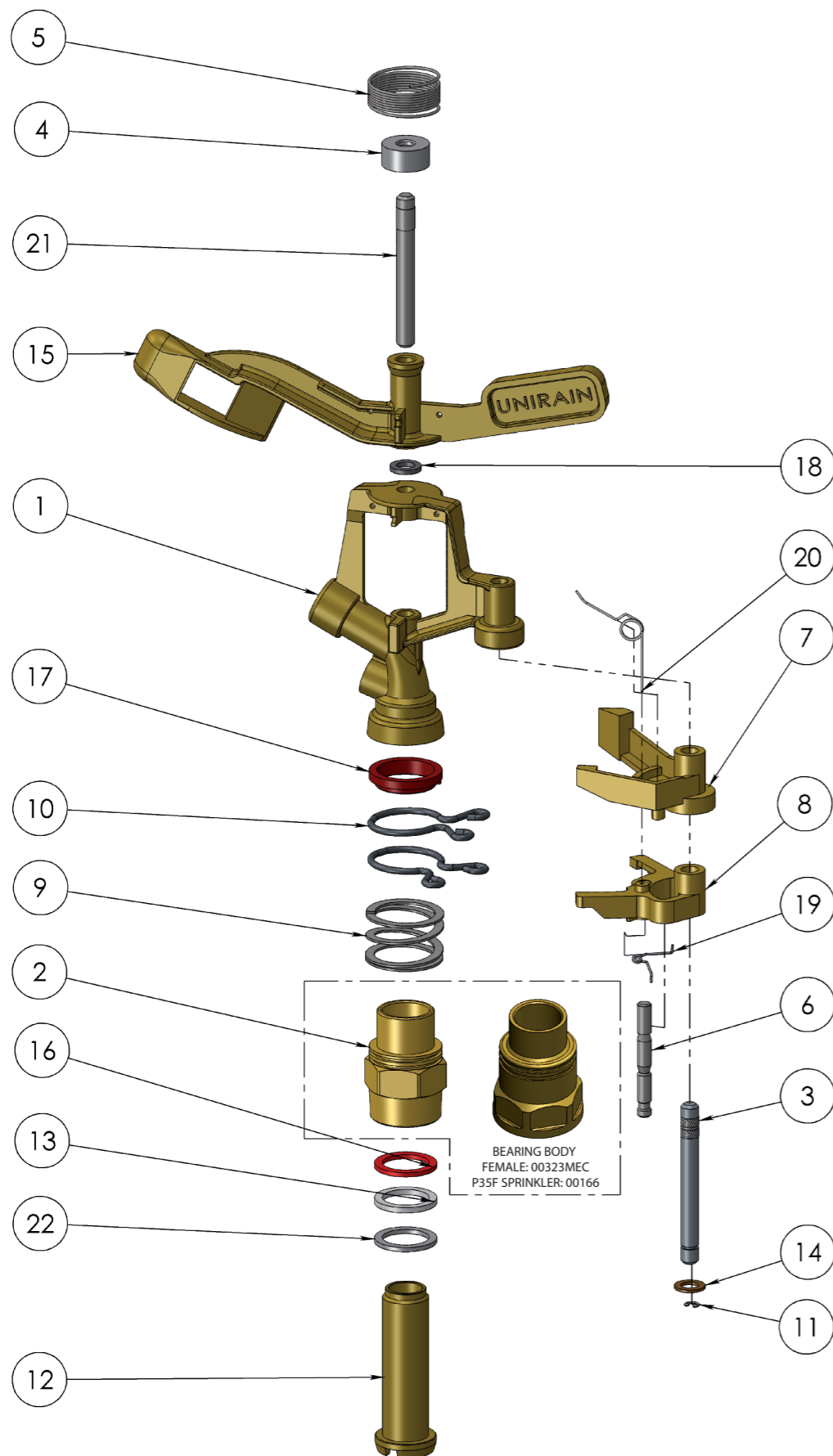
L/H: Liters Per Minute
R(m): Throw Radius (meter)

WARRANTY AND EXCLUSIONS

The manufacturer guarantees its products for direct customer against any defects in materials or manufacture for a period of two years from the original date of purchase, when the products have been used under normal operating conditions. The manufacturer assumes no responsibility for installation, removal or repairs carried out by unauthorised personnel. The manufacturer's liability under this warranty is limited to the replacement or repair of defective parts and the manufacturer does not accept responsibility for damages to crops or any other consequential damages deriving from defects in the products covered by this warranty.

THE PRESENT WARRANTY SUPERCEDES AND VOIDS ALL OTHER WARRANTIES, WHETHER EXPRESS OR IMPLIED, INCLUDING THOSE OF MERCHANTABILITY AND FITNESS FOR PARTICULAR PURPOSES OR ANY OTHER ATTRIBUTING LIABILITY TO THE MANUFACTURER.

No agent, employee or representative of the manufacturer is authorised to void, alter or add to the conditions contained in this warranty, nor to take responsibility for, nor to make guarantees not specified herein.



COMPONENT NUMBER	PART NUMBER	DESCRIPTION	MATERIAL	QUANTITY
1	00813	P35 Sprinkler Body	Brass	1
2	06150	F35 Bearing Body	Brass	1
3	00817	Cams Shaft	Stainless Steel	1
4	06161	Arm Hat	PE	1
5	06183	3/4" Series Arm Spring	Stainless Steel	1
6	00816	P35 Inverter Shaft	Stainless Steel	1
7	00819	P35 Upper Cam	Brass	1
8	00821	P35 Lower Cam	Brass	1
9	06151	Bearing Spring	Stainless Steel	1
10	00815	Inverter Limit Spring	Stainless Steel	2
11	00824	Seal Clip	Stainless Steel	1
12	06147	Bearing Shaft	Brass	1
13	06736	Bearing Intermediate Washer	High Density PE	1
14	00822	Cams Washer	Brass	1
15	00811	P35 Sprinkler Arm	Brass	1
16	00252	Bearing Upper Washer	Anti Hydrolysis PU	1
17	00255	Bearing Body Lock	High Density PE	1
18	06162	Arm Support Washer	NBR	1
19	00823	Inverter Shaft Spring	Stainless Steel	1
20	01687	Inverter Spring	Stainless Steel	1
21	06163	Arm Shaft	Stainless Steel	1
22	07459	Bearing Lower Washer	NBR	1

Process/Manufacturer UNIRAIN	Size A3	Material	Code 00165
	Scale 1:2	Name P35 Sprinkler	
PRIVATE AND CONFIDENTIAL THE INFORMATION CONTAINED ON THIS PLAN IS FOR UNIRAIN USE ONLY. FORBIDDEN CHANGE OR AMENDMENT OF VALUES OF THE PLAN WITHOUT A CONSENT IN WRITING.	25/06/09		
	E.G.B.		