

Unirain F30 - F30F

Full Circle Impact Sprinkler Low and Medium flow Brass



Application

Recommended for agricultural use, and medium flows, it is very suitable for removable pipe systems. It can be assembled with one or two nozzles. It is ideal for farmers, as it is a strong and durable product that reduces evaporation loss and wind effect thanks to its water jet throw radius. It can be assembled with female base thread in order to avoid waste of material.

Advantages

- Made of brass, its arm and body have a wide impact area that provides longer life.
- Its counterweighted arm provides a steady turn speed.
- It can be assembled with one or two nozzles.
- Three different vanes can be used to achieve the desired coverage and spray balance according to the available system pressure.

Technical specifications

- Full circle impact sprinkler
- 3/4" base thread male or female (F30F)
- Main and secondary nozzle
- 25° nozzle trajectory angle.
- Pressure range: 20-80 PSI
- Nozzle range: 9/64"-7/32"
- Body, arm and bearing assembly made of brass.
- Fulcrum pin and springs made of stainless steel.
- Color-coded anti abrasive acetal resin nozzles carved in millimetres and inches for a better identification (brass nozzles to be optionally assembled).
- Backturn lock between the sprinkler body and the bearing spring.



F30

F30F

	Pressure (psi)	Nozzles	Vanes
HIGH	60	3PRN 6 3FCN	30 V
MEDIUM	40	3PRN 6 3FCN	WITHOUT VANE
LOW	30	3PRN	30RV
VERY LOW	20	3PRN	30BV



F30	PRESSURE (PSI)	NOZZLES 9/64" + 3/32"		NOZZLES 5/32" + 3/32"		NOZZLES 11/64" + 3/32"		NOZZLES 3/16" + 3/32"		NOZZLES 3/16" + 1/8"		NOZZLES 13/64" + 1/8"		NOZZLES 7/32" + 1/8"	
		GPM	R(ft)	GPM	R(ft)	GPM	R(ft)	GPM (+)	R(ft)	GPM	R(ft)	GPM	R(ft)	GPM	R(ft)
TWO NOZZLES	20			4.31	39.4	4.96	40.0	5.66	40.7	6.65	40.7	7.47	41.0	8.33	41.3
	25	4.18	40.0	4.83	41.0	5.55	41.3	6.31	42.7	7.40	42.7	8.30	43.0	9.25	44.0
	30	4.58	40.4	5.27	42.7	6.07	44.0	6.93	45.6	8.15	45.6	9.15	46.9	10.20	47.9
	35	4.95	41.0	5.71	43.6	6.57	44.9	7.51	46.9	8.83	46.9	9.93	48.6	11.10	49.9
	40	5.29	41.3	6.11	44.0	7.03	45.9	8.03	47.9	9.46	47.9	10.65	49.6	11.90	50.9
	45	5.61	42.0	6.48	44.6	7.46	46.9	8.53	48.9	10.05	48.9	11.30	50.5	12.64	51.8
	50	5.91	42.7	6.82	44.9	7.87	47.6	9.00	49.9	10.60	49.9	11.90	51.5	13.34	53.1
	55	6.20	43.0	7.15	45.6	8.25	47.9	9.45	50.5	11.10	50.5	12.50	51.8	14.00	53.5
	60	6.48	43.6	7.47	45.9	8.60	48.6	9.86	50.9	11.60	50.9	13.00	52.5	14.50	54.4
	65	6.75	44.0	7.78	46.6	8.93	48.9	10.27	51.5	12.10	51.5	13.50	53.1	15.00	54.5
	70	7.00	44.6	8.08	46.9	9.25	49.5	10.66	51.8	12.50	51.8	14.00	53.5	15.45	55.1
75	7.25	44.9	8.37	47.6	9.56	49.9	11.02	52.5	12.90	52.5	14.40	54.1	15.90	55.4	
80	7.49	45.6	8.65	47.9	9.87	50.5	11.36	53.1	13.25	53.1	14.80	54.5	16.30	56.1	

F30P	PRESSURE (PSI)	NOZZLES 9/64"		NOZZLES 5/32"		NOZZLES 11/64"		NOZZLES 3/16"		NOZZLES 13/64"		NOZZLES 7/32"	
		GPM	R(ft)	GPM	R(ft)	GPM	R(ft)	GPM (+)	R(ft)	GPM	R(ft)	GPM	R(ft)
ONE NOZZLE AND PLUG	20			3.14	39.4	3.79	40.0	4.49	40.7	5.31	41.0	6.16	41.3
	25	2.88	40.0	3.52	41.0	4.24	41.3	5.00	42.7	5.90	43.0	6.85	44.0
	30	3.15	40.4	3.85	42.7	4.64	44.0	5.50	45.6	6.50	46.9	7.55	47.9
	35	3.40	41.0	4.16	43.6	5.02	44.9	5.96	46.9	7.05	48.6	8.20	49.9
	40	3.64	41.3	4.45	44.0	5.37	45.9	6.38	47.9	7.55	49.6	8.80	50.9
	45	3.86	42.0	4.72	44.6	5.70	46.9	6.78	48.9	8.00	50.5	9.35	51.8
	50	4.07	42.7	4.98	44.9	6.01	47.6	7.16	49.9	8.45	51.5	9.90	53.1
	55	4.27	43.0	5.22	45.6	6.30	47.9	7.52	50.5	8.85	51.8	10.40	53.5
	60	4.46	43.6	5.45	45.9	6.57	48.6	7.85	50.9	9.25	52.5	10.75	54.4
	65	4.65	44.0	5.68	46.6	6.83	48.9	8.18	51.5	9.60	53.1	11.10	54.5
	70	4.83	44.6	5.90	46.9	7.09	49.5	8.50	51.8	9.95	53.5	11.40	55.1
75	5.00	44.9	6.11	47.6	7.34	49.9	8.80	52.5	10.25	54.1	11.70	55.4	
80	5.17	45.6	6.30	47.9	7.58	50.5	9.09	53.1	10.50	54.5	12.00	56.1	

F30V	PRESSURE (PSI)	NOZZLES 9/64" + 3/32"		NOZZLES 5/32" + 3/32"		NOZZLES 11/64" + 3/32"		NOZZLES 3/16" + 3/32"		NOZZLES 3/16" + 1/8"		NOZZLES 13/64" + 1/8"		NOZZLES 7/32" + 1/8"	
		GPM	R(ft)	GPM	R(ft)	GPM	R(ft)	GPM (+)	R(ft)	GPM	R(ft)	GPM	R(ft)	GPM	R(ft)
TWO NOZZLES AND VANE TO HIGH RANGE	35	4.95	44.3	5.71	46.3	6.57	47.6	7.51	49.5	8.83	49.5	9.93	51.5	11.10	52.5
	40	5.29	45.6	6.11	46.9	7.03	47.9	8.03	50.5	9.46	50.5	10.65	52.5	11.90	53.1
	45	5.61	45.9	6.48	47.9	7.46	48.9	8.53	51.8	10.05	51.8	11.30	53.1	12.64	54.1
	50	5.91	46.6	6.82	48.9	7.87	49.9	9.00	53.1	10.60	53.1	11.90	53.5	13.34	55.1
	55	6.20	46.9	7.15	50.2	8.25	50.9	9.45	54.1	11.10	54.1	12.50	54.1	14.00	56.1
	60	6.48	47.6	7.47	50.5	8.60	51.5	9.86	54.5	11.60	54.5	13.00	55.1	14.50	57.1
	65	6.75	47.9	7.78	50.9	8.93	51.8	10.27	55.1	12.10	55.1	13.50	56.1	15.00	58.1
	70	7.00	48.6	8.08	51.5	9.25	53.1	10.66	55.4	12.50	55.4	14.00	57.1	15.45	59.1
	75	7.25	48.9	8.37	51.8	9.56	54.1	11.02	56.1	12.90	56.1	14.40	58.1	15.90	60.0
	80	7.49	49.9	8.65	52.5	9.87	55.1	11.36	56.4	13.25	56.4	14.80	59.1	16.30	61.0

F30PV	PRESSURE (PSI)	NOZZLES 9/64"		NOZZLES 5/32"		NOZZLES 11/64"		NOZZLES 3/16"		NOZZLES 13/64"		NOZZLES 7/32"	
		GPM	R(ft)	GPM	R(ft)	GPM	R(ft)	GPM (+)	R(ft)	GPM	R(ft)	GPM	R(ft)
ONE NOZZLE, PLUG AND VANE TO HIGH RANGE	35	3.40	44.3	4.16	46.3	5.02	47.6	5.96	49.5	7.05	51.5	8.20	52.5
	40	3.64	45.6	4.45	46.9	5.37	47.9	6.38	50.5	7.55	52.5	8.80	53.1
	45	3.86	45.9	4.72	47.9	5.70	48.9	6.78	51.8	8.00	53.1	9.35	54.1
	50	4.07	46.6	4.98	48.9	6.01	49.9	7.16	53.1	8.45	53.5	9.90	55.1
	55	4.27	46.9	5.22	50.2	6.30	50.9	7.52	54.1	8.85	54.1	10.40	56.1
	60	4.46	47.6	5.45	50.5	6.57	51.5	7.85	54.5	9.25	55.1	10.75	57.1
	65	4.65	47.9	5.68	50.9	6.83	51.8	8.18	55.1	9.60	56.1	11.10	58.1
	70	4.83	48.6	5.90	51.5	7.09	53.1	8.50	55.4	9.95	57.1	11.40	59.1
	75	5.00	48.9	6.11	51.8	7.34	54.1	8.80	56.1	10.25	58.1	11.70	60.0
	80	5.17	49.9	6.30	52.5	7.58	55.1	9.09	56.4	10.50	59.1	12.00	61.0

Data obtained under ideal test conditions. It can be affected by wind, bad hydraulic conditions or other adverse factors.
Highest point of the jet above the nozzle: 2.8 m (using standard nozzle 5 / 32 "to 35.2 MCA)
Throw radius jets achieved with the 0.9m lift. Shaded areas not recommended.
(* Standard Nozzle.

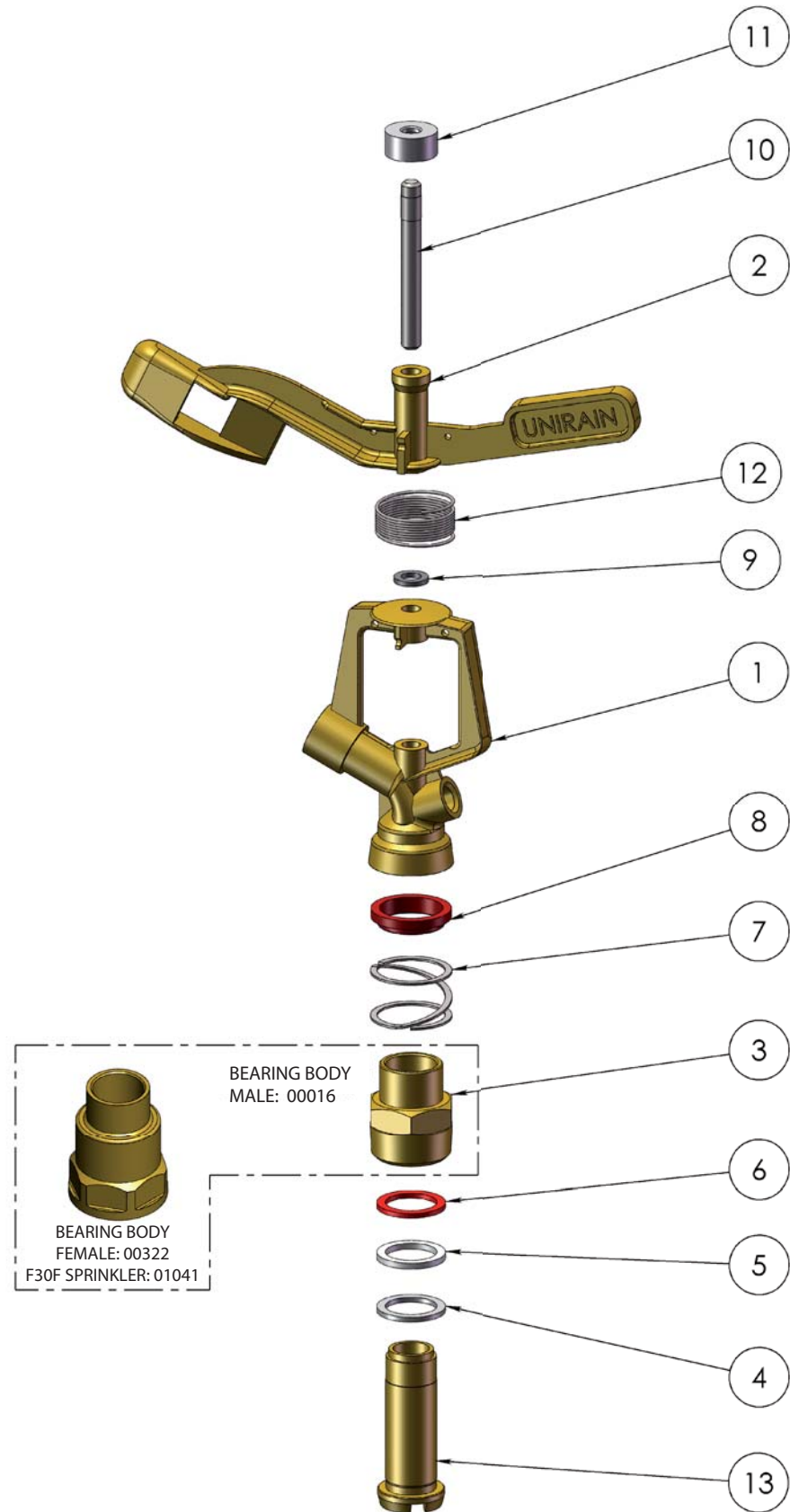
PSI: Pounds per Square Inch
GPM: Gallons Per Minute
R(ft): Throw Radius in feet

WARRANTY AND EXCLUSIONS

The manufacturer guarantees its products for direct customer against any defects in materials or manufacture for a period of two years from the original date of purchase, when the products have been used under normal operating conditions. The manufacturer assumes no responsibility for installation, removal or repairs carried out by unauthorised personnel. The manufacturer's liability under this warranty is limited to the replacement or repair of defective parts and the manufacturer does not accept responsibility for damages to crops or any other consequential damages deriving from defects in the products covered by this warranty.


THE PRESENT WARRANTY SUPERCEDES AND VOIDS ALL OTHER WARRANTIES, WHETHER EXPRESS OR IMPLIED, INCLUDING THOSE OF MERCHANTABILITY AND FITNESS FOR PARTICULAR PURPOSES OR ANY OTHER ATTRIBUTING LIABILITY TO THE MANUFACTURER.

No agent, employee or representative of the manufacturer is authorised to void, alter or add to the conditions contained in this warranty, nor to take responsibility for, nor to make guarantees not specified herein.



COMPONENT NUMBER	PART NUMBER	DESCRIPTION	MATERIAL	QUANTITY
1	00031	F30 Sprinkler Body	Brass	1
2	00029	F30 Sprinkler Arm	Brass	1
3	00016	F30 Bearing Body	Brass	1
4	07459	Bearing Lower Washer	NBR	1
5	06736	Bearing Intermediate Washer	High Density PE	1
6	00252	Bearing Upper Washer	Anti Hydrolysis PU	1
7	00018	Bearing Spring	Stainless Steel	1
8	00255	Bearing Body Lock	High Density PE	1
9	06162	Arm Support Washer	NBR	1
10	06163	Arm Shaft	Stainless Steel	1
11	06161	Arm Hat	Low/Medium Density PE	1
12	06183	3/4" Series Arm Spring	Stainless Steel	1
13	00017	F30 Bearing Shaft	Brass	1

Notes

Process/Manufacturer UNIRAIN	Size A3	Material --	Code 00150
	Scale 1:2	Name F30 Sprinkler	
PRIVATE AND CONFIDENTIAL THE INFORMATION CONTAINED ON THIS PLAN IS FOR UNIRAIN USE ONLY. FORBIDDEN CHANGE OR AMENDMENT OF VALUES OF THE PLAN WITHOUT A CONSENT IN WRITING.		15/05/09 E.G.B.	 unirain IRRIGATION PRODUCTS