

Unirain F4444

Full Circle Impact Sprinkler

Low and Medium flow Plastic



Application

For general agricultural use, medium and high flows, it is designed specially for travelling systems, mainly CENTER PIVOT and LINEAR MOVES. The special conditions of these machines suggest using a kind of sprinklers that differs from those traditionally used on solid sets. It is also recommended for undertree irrigation.

Advantajes

- Two twin water outlets, both for main nozzles. This eliminates secondary nozzle plugging and provides a higher flow per sprinkler, which means a lower number of sprinklers in use.
- Its 8° water stream angle greatly minimises the effects of wind when installed on PIVOTS (10 to 14ft high), reducing evaporation and improving uniformity.
- Three different types of water guide vanes to achieve the desired coverage and spray balance according to the available system pressure.

Technical specifications

- Full circle impact sprinkler.
- 3/4" M base thread
- Two main nozzles
- 8° Nozzle trajectory angle
- Pressure range: 20-80 PSI
- Nozzle range: 9/64"-15/64"
- Acetal resin body and bearing.
- Polyamide fibreglass arm.
- Protection cap against UV radiation.
- Fulcrum pin and springs made of stainless steel.
- Expanded fulcrum, pin upper end diameter for a better fitting into the sprinkler body.
- Color-coded anti abrasive acetal resin nozzles carved in millimetres and inches for a better identification.
- It can be assembled with plastic or brass nozzles.
- Backturn lock between the sprinkler body and the compression spring.



F4444

	Pressure (psi)	Nozzles	Vanes
HIGH	60	3PRN ó 3FCN	30 V
MEDIUM	40	3PRN ó 3FCN	WITHOUT VANE
LOW	30	3PRN	30RV
VERY LOW	20	3PRN	30BV



F4444	PRESSURE (PSI)	NOZZLES 9/64" + 9/64" GPM R(ft)		NOZZLES 5/32" + 5/32" GPM R(ft)		NOZZLES 11/64" + 11/64" GPM R(ft)		NOZZLES 3/16" + 3/16" GPM (+) R(ft)		NOZZLES 13/64" + 13/64" GPM R(ft)		NOZZLES 7/32" + 7/32" GPM R(ft)		NOZZLES 15/64" + 15/64" GPM R(ft)	
TWO NOZZLES	20	5.01	30.8	6.09	33.1	7.23	32.5	8.34	32.5	9.49	32.8	10.65	32.8	11.82	32.8
	25	5.60	31.8	6.81	33.5	8.07	33.5	9.32	33.8	10.60	33.8	11.91	33.8	13.24	33.8
	30	6.12	32.5	7.45	33.8	8.82	34.1	10.19	34.4	11.61	34.4	13.05	34.4	14.52	34.4
	35	6.80	33.5	8.03	34.1	9.51	34.4	11.0	34.8	12.54	35.1	14.11	35.1	15.69	35.1
	40	7.04	33.8	8.57	34.4	10.16	34.8	11.75	35.1	13.40	35.4	15.08	35.8	16.79	35.8
	45	7.46	34.1	9.08	34.8	10.76	35.1	12.46	35.4	14.21	35.8	16.00	36.1	17.82	36.1
	50	7.86	34.4	9.57	35.1	11.33	35.4	13.12	35.8	14.97	36.1	16.87	36.1	18.79	36.4
	55	8.23	34.8	10.03	35.4	11.87	35.8	13.75	36.1	15.70	36.4	17.70	36.4	19.73	36.7
	60	8.59	35.1	10.46	35.8	12.39	36.1	14.36	36.4	16.40	36.7	18.49	36.7	20.61	37.1
	65	8.94	35.4	10.87	35.8	12.89	36.4	14.94	36.4	17.07	37.1	19.25	37.1	21.46	37.4
70	9.27	35.4	11.27	36.1	13.37	36.4	15.50	36.7	17.71	37.1	19.98	37.4	22.29	37.7	
75	9.59	35.8	11.65	36.1	13.83	36.7	16.04	37.1	18.33	37.4	20.68	37.7	23.08	38.1	
80	9.90	35.8	12.02	36.4	14.27	36.7	16.56	37.1	18.92	37.4	21.36	37.7	23.84	38.1	

F4444P	PRESSURE (PSI)	NOZZLES 9/64" GPM R(ft)		NOZZLES 5/32" GPM R(ft)		NOZZLES 11/64" GPM R(ft)		NOZZLES 3/16" GPM (+) R(ft)		NOZZLES 13/64" GPM R(ft)		NOZZLES 7/32" GPM R(ft)		NOZZLES 15/64" GPM R(ft)	
ONE NOZZLE AND PLUG	20	2.56	30.8	3.14	33.1	3.78	32.5	4.48	32.5	5.23	32.8	6.03	32.8	6.89	32.8
	25	2.86	31.8	3.51	33.5	4.22	33.5	5.00	33.8	5.83	33.8	6.73	33.8	7.68	33.8
	30	3.13	32.5	3.84	33.8	4.62	34.1	5.46	34.4	6.38	34.4	7.36	34.4	8.40	34.4
	35	3.37	33.5	4.14	34.1	4.98	34.4	5.90	34.8	6.88	35.1	7.93	35.1	9.06	35.1
	40	3.60	33.8	4.42	34.4	5.32	34.8	6.30	35.1	7.35	35.4	8.47	35.8	9.67	35.8
	45	3.82	34.1	4.69	34.8	5.64	35.1	6.67	35.4	7.78	35.8	8.97	36.1	10.25	36.1
	50	4.02	34.4	4.94	35.1	5.94	35.4	7.03	35.8	8.20	36.1	9.45	36.1	10.79	36.4
	55	4.22	34.8	5.17	35.4	6.23	35.8	7.37	36.1	8.59	36.4	9.91	36.4	11.30	36.7
	60	4.40	35.1	5.40	35.8	6.50	36.1	7.69	36.4	8.97	36.7	10.34	36.7	11.80	37.1
	65	4.58	35.4	5.62	35.8	6.76	36.4	8.00	36.4	9.33	37.1	10.75	37.1	12.27	37.4
70	4.75	35.4	5.83	36.1	7.01	36.4	8.29	36.7	9.67	37.1	11.15	37.4	12.72	37.7	
75	4.91	35.8	6.03	36.1	7.25	36.7	8.58	37.1	10.00	37.4	11.53	37.7	13.16	38.1	
80	5.08	35.8	6.23	36.4	7.49	36.7	8.85	37.1	10.33	37.4	11.91	37.7	13.58	38.1	

F4444V	PRESSURE (PSI)	NOZZLES 9/64" + 9/64" GPM R(ft)		NOZZLES 5/32" + 5/32" GPM R(ft)		NOZZLES 11/64" + 11/64" GPM R(ft)		NOZZLES 3/16" + 3/16" GPM (+) R(ft)		NOZZLES 13/64" + 13/64" GPM R(ft)		NOZZLES 7/32" + 7/32" GPM R(ft)		NOZZLES 15/64" + 15/64" GPM R(ft)	
TWO NOZZLES AND VANE TO HIGH RANGE	35	6.80	35.1	8.03	35.8	9.51	36.1	11.00	36.4	12.54	36.7	14.11	36.7	15.69	36.7
	40	7.04	35.8	8.57	36.1	10.16	36.4	11.75	36.7	13.40	37.1	15.08	37.4	16.79	37.4
	45	7.46	36.1	9.08	36.4	10.76	36.7	12.46	37.1	14.21	37.4	16.00	37.7	17.82	37.7
	50	7.86	36.4	9.57	36.7	11.33	37.1	13.12	37.4	14.97	37.7	16.87	37.7	18.79	38.1
	55	8.23	36.7	10.03	37.1	11.87	37.4	13.75	37.7	15.70	38.1	17.70	38.1	19.73	38.4
	60	8.59	37.1	10.46	37.4	12.39	37.7	14.36	38.1	16.40	38.4	18.49	38.4	20.61	39.0
	65	8.94	37.4	10.87	37.4	12.89	38.1	14.94	38.1	17.07	39.0	19.25	39.0	21.46	39.4
	70	9.27	37.7	11.27	37.7	13.37	38.1	15.50	38.4	17.71	39.0	19.98	39.4	22.29	39.7
	75	9.59	37.7	11.65	37.7	13.83	38.4	16.04	39.0	18.33	39.4	20.68	39.7	23.08	40.0
	80	9.90	38.1	12.02	38.1	14.27	38.4	16.56	39.0	18.92	39.4	21.36	39.7	23.84	40.0

F4444PV	PRESSURE (PSI)	NOZZLES 9/64" GPM R(ft)		NOZZLES 5/32" GPM R(ft)		NOZZLES 11/64" GPM R(ft)		NOZZLES 3/16" GPM (+) R(ft)		NOZZLES 13/64" GPM R(ft)		NOZZLES 7/32" GPM R(ft)		NOZZLES 15/64" GPM R(ft)	
ONE NOZZLE, PLUG AND VANE TO HIGH RANGE	35	3.37	35.1	4.14	35.8	4.98	36.1	5.90	36.4	6.88	36.7	7.93	36.7	9.06	36.7
	40	3.60	35.8	4.42	36.1	5.32	36.4	6.30	36.7	7.35	37.1	8.47	37.4	9.67	37.4
	45	3.82	36.1	4.69	36.4	5.64	36.7	6.67	37.1	7.78	37.4	8.97	37.7	10.25	37.7
	50	4.02	36.4	4.94	36.7	5.94	37.1	7.03	37.4	8.20	37.7	9.45	37.7	10.79	38.1
	55	4.22	36.7	5.17	37.1	6.23	37.4	7.37	37.7	8.59	38.1	9.91	38.1	11.30	38.4
	60	4.40	37.1	5.40	37.4	6.50	37.7	7.69	38.1	8.97	38.4	10.34	38.4	11.80	39.0
	65	4.58	37.4	5.62	37.4	6.76	38.1	8.00	38.1	9.33	39.0	10.75	39.0	12.27	39.4
	70	4.75	37.7	5.83	37.7	7.01	38.1	8.29	38.4	9.67	39.0	11.15	39.4	12.72	39.7
	75	4.91	37.7	6.03	37.7	7.25	38.4	8.58	39.0	10.00	39.4	11.53	39.7	13.16	40.0
	80	5.08	38.1	6.23	38.1	7.49	38.4	8.85	39.0	10.33	39.4	11.91	39.7	13.58	40.0

Data obtained under ideal test conditions. It can be affected by wind, bad hydraulic conditions or other adverse factors. Highest point of the jet above the nozzle: 0.8 m (using standard nozzle 3 / 16" to 35.2 MCA) Throw radius jets achieved with the 0.9m lift. Shaded areas not recommended. (*) Standard Nozzle.

PSI: Pounds per Square Inch
GPM: Gallons Per Minute
R(ft): Throw Radius in feet

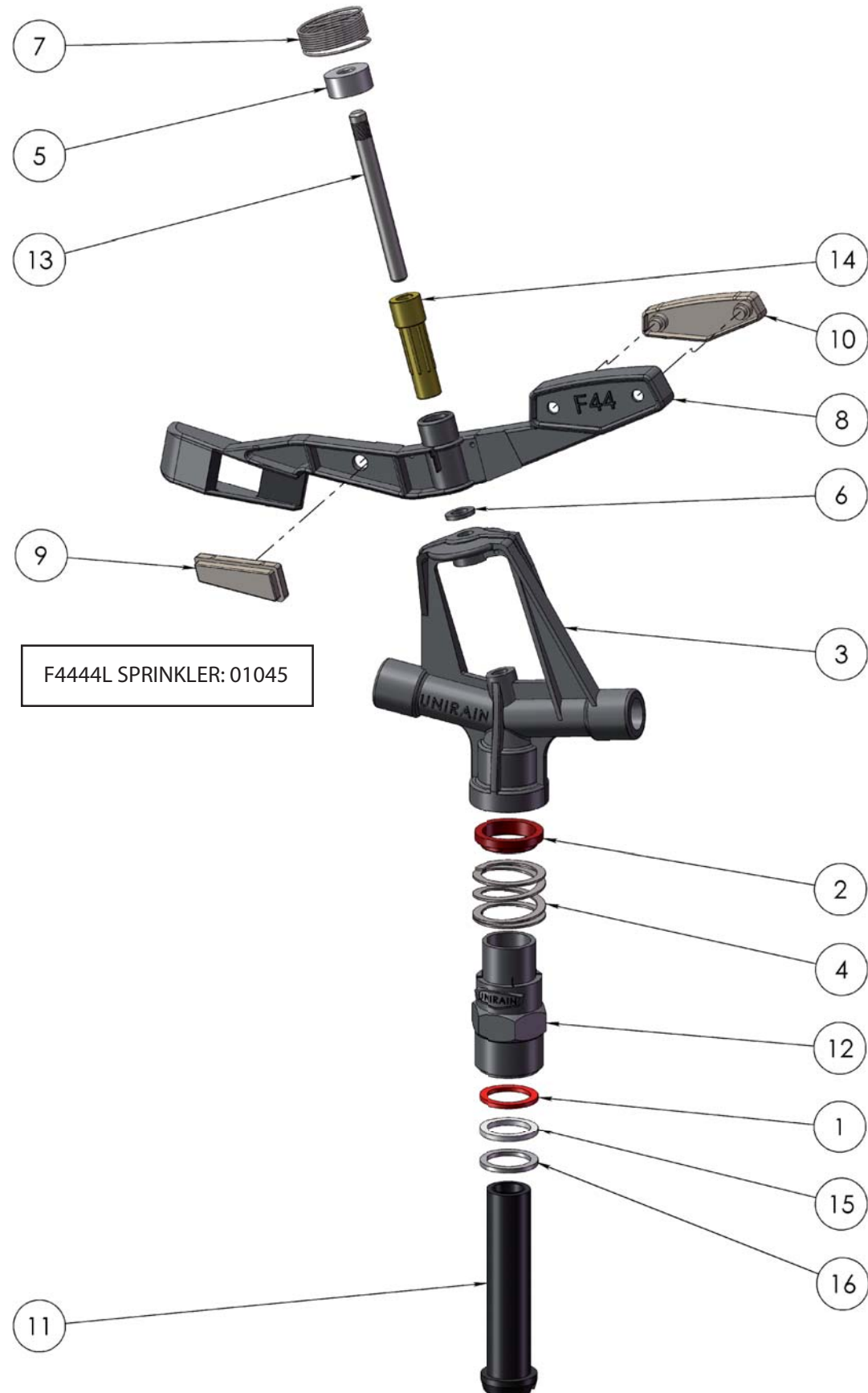
Due to the large number of possible combinations of nozzles, only the most common ones are represented. To find information relating to other combinations, please advise factory.

WARRANTY AND EXCLUSIONS

The manufacturer guarantees its products for direct customer against any defects in materials or manufacture for a period of two years from the original date of purchase, only when the products have been used under normal operating conditions. The manufacturer assumes no responsibility for installation, removal or repairs carried out by unauthorised personnel. The manufacturer's liability under this warranty is limited to the replacement or repair of defective parts and the manufacturer does not accept responsibility for damages to crops or any other consequential damages deriving from defects in the products covered by this warranty.


THE PRESENT WARRANTY SUPERCEDES AND Voids ALL OTHER WARRANTIES, WHETHER EXPRESS OR IMPLIED, INCLUDING THOSE OF MERCHANTABILITY AND FITNESS FOR PARTICULAR PURPOSES OR ANY OTHER ATTRIBUTING LIABILITY TO THE MANUFACTURER.

No agent, employee or representative of the manufacturer is authorised to void, alter or add to the conditions contained in this warranty, nor to take responsibility for, nor to make guarantees not specified herein.



COMPONENT NUMBER	CODE	DESCRIPTION	MATERIAL	QUANTITY
1	00252	Bearing Upper Washer	Anti Hydrolisis PU	1
2	00255	Bearing Body Lock	High Density PE	1
3	00326	Sprinkler BodyF4444	POM	1
4	06151	Bearing Spring	Stainless Steel	1
5	06161	Swing Arm Cap	PE	1
6	06162	Swing Arm Support Washer	NBR	1
7	06183	Arm Spring 3/4" Series	Stainless Steel	1
8	06514	F44 Sprinkler Arm F44	PA6 + Fiber Glass	1
9	06515	Front Counterweight	ZAMAK	1
10	06516UNI	Unirain Back Counterweight	ZAMAK	1
11	06517	Bearing pin P45 / F44	POM	1
12	06518UNI	Bearing body F44	POM	1
13	06519	fulcrum pin	Stainless Steel	1
14	06636	Arm Bearing	POM	1
15	06736	Bearing Intermediate washer	High Density PE	1
16	07459	Bearing Lower washer	NBR	1

Notes

Process/Manufacturer UNIRAIN	Size A3	Material	Code 01044
	Scale 1:2	Name F4444 Sprinkler	
PRIVATE AND CONFIDENTIAL THE INFORMATION CONTAINED ON THIS PLAN IS FOR UNIRAIN USE ONLY. FORBIDDEN CHANGE OR AMENDMENT OF VALUES OF THE PLAN WITHOUT A CONSENT IN WRITING.		24/06/09 E.G.B.	 unirain IRRIGATION PRODUCTS