

Unirain P45 - P45L PROTECTED

Part Circle Impact Sprinkler
Low and Medium Flow Plastic



Application

Suitable for general agricultural use. Compact in design, it includes a sand-proof bearing system and reinforcing ribs on the sprinkler body. High resistance and durability, made of plastics and treated against the UV radiation. It is a very versatile sprinkler because of its reversing system and clip which allow the sprinkler switch from part to full circle and vice versa. Ideal for areas bordering or near elements that should not get wet.

There are 2 key differences from F45: absence of counterweights in the arm and protection of the most sensitive areas of the sprinkler, making it more robust and durable.

Advantages

- Maximum protection of the spring against impacts, dirt, foreign bodies, insects and animals, frost ...
- Increased frequency / speed of arm swing, improving irrigation uniformity.
- Sand-proof bearing system and reinforcing ribs on its body.
- Perfect inner finish
- Its exclusive reversing system is protected against sand and can be disassembled in seconds without any tools.
- It can be assembled with one or two nozzles. Sprinkler body adapted to be coupled to 3Q/2Q bayonet nozzle as well as 3PRN/3PSN thread nozzle.
- Three different types of water guide vane can be used to achieve the desired coverage and spray balance according to the available water pressure.

Technical specifications

- Double purpose impact sprinkler: part circle ranging from 25° to 325° with 10° steps, or full circle.
- ¾" Male base thread
- Dual nozzles, Main and secondary.
- 23° nozzle trajectory angle.
- Pressure range: 1,38 - 5,52 Bar
- Nozzle range: 1/8" (3,18mm) - 1/4" (6,35mm)
- made of acetal resin with UV-protection treatment.
- Body and spring protective cap made of HDPE.
- Protective backturn lock for bearing made of HDPE between the sprinkler body and the compression spring.
- Fulcrum pin and springs made of stainless steel.
- Expanded fulcrum, pin upper end diameter for a better fitting into the sprinkler body.
- Color-coded anti abrasive acetal resin nozzles carved in millimetres and inches for a clear identification.
- Reversing system protected.
- Female thread adapter made of fiber glass reinforced PA.



P45PRO/P45LPRO



P45FPRO/P45LFPRO

	Pressure (bar)	Nozzles	Vanes
HIGH	4.14	3PRN 6 3FCN	30V
MEDIUM	2.76	3PRN 6 3FCN	WITHOUT VANE
LOW	2.10	3PRN	30RV
VERY LOW	1.38	3PRN	30BV

P45PRO P45LPRO	PRESSURE (Bar)	NOZZLES 1/8" + 3/32" L/H R(m)	NOZZLES 9/64" + 3/32" L/H R(m)	NOZZLES 5/32" + 3/32" L/H (+) R(m)	NOZZLES 11/64" + 3/32" L/H R(m)	NOZZLES 3/16" + 3/32" L/H R(m)	NOZZLES 3/16" + 1/8" L/H R(m)	NOZZLES 13/64" + 1/8" L/H R(m)	NOZZLES 7/32" + 1/8" L/H R(m)
TWO NOZZLES	1.38	723 11.6	849 11.9	979 12.4	1126 12.8	1285 13.2	1511 13.2	1697 13.7	1892 14.0
	1.72	806 11.9	949 12.3	1097 13.0	1261 13.4	1433 13.9	1681 14.3	1885 14.3	2101 14.8
	2.07	886 12.3	1040 13.0	1199 13.6	1379 14.0	1574 14.5	1851 14.5	2078 14.9	2317 15.4
	2.41	961 12.6	1124 13.3	1297 14.0	1492 14.5	1706 14.9	2005 14.9	2255 15.4	2521 15.8
	2.76	1029 12.8	1201 13.6	1388 14.3	1597 14.8	1824 15.2	2149 15.2	2419 15.7	2703 16.2
	3.10	1092 13.0	1274 13.7	1472 14.5	1694 15.1	1937 15.5	2283 15.5	2566 16.0	2873 16.5
	3.45	1151 13.1	1342 13.9	1549 14.6	1787 15.2	2044 15.8	2407 15.8	2703 16.3	3032 16.8
	3.79	1208 13.3	1408 14.0	1624 14.8	1874 15.4	2146 16.0	2521 16.0	2839 16.6	3180 17.1
	4.14	1263 13.4	1472 14.2	1697 14.9	1953 15.5	2239 16.2	2635 16.2	2953 16.8	3293 17.2
	4.48	1315 13.6	1533 14.3	1767 15.1	2028 15.7	2333 16.3	2748 16.3	3066 16.9	
	4.83	1365 13.7	1590 14.5	1835 15.2	2101 15.8	2421 16.5	2839 16.5	3180 17.1	
5.17	1413 13.9	1647 14.6	1901 15.4	2171 16.0	2503 16.6	2930 16.6			
5.52	1458 14.0	1701 14.8	1965 15.5	2242 16.2	2580 16.8	3009 16.8			

P45PPO P45LPPRO	PRESSURE (Bar)	NOZZLES 1/8" L/H R(m)	NOZZLES 9/64" L/H R(m)	NOZZLES 5/32" L/H (+) R(m)	NOZZLES 11/64" L/H R(m)	NOZZLES 3/16" L/H R(m)	NOZZLES 13/64" L/H R(m)	NOZZLES 7/32" L/H R(m)	NOZZLES 15/64" L/H R(m)	NOZZLES 1/4" L/H R(m)
ONE NOZZLE AND PLUG	1.38		585 11.9	714 12.6	855 13.1	1013 13.5	1200 13.6	1397 13.8	1584 13.9	1806 14.0
	1.72		654 12.3	799 13.0	963 13.4	1136 13.9	1340 13.9	1556 14.2	1772 14.3	2021 14.5
	2.07		715 13.0	874 13.6	1054 14.0	1249 14.5	1476 14.9	1715 15.2	1953 15.4	2226 15.5
	2.41	609 12.6	772 13.3	945 14.0	1140 14.5	1354 14.9	1601 15.4	1862 15.8	2112 16.0	2407 16.2
	2.76	652 12.8	827 13.6	1011 14.3	1220 14.8	1449 15.2	1715 15.7	1999 16.2	2271 16.3	2589 16.6
	3.10	693 13.0	877 13.7	1072 14.5	1295 15.1	1540 15.5	1817 16.0	2124 16.5	2407 16.8	2748 17.1
	3.45	731 13.1	924 13.9	1131 14.6	1365 15.2	1626 15.8	1919 16.3	2248 16.8	2544 17.1	2907 17.4
	3.79	768 13.3	970 14.0	1186 14.8	1431 15.4	1708 16.0	2010 16.6	2362 17.1	2657 17.4	3043 17.7
	4.14	802 13.4	1013 14.2	1238 14.9	1492 15.5	1783 16.2	2101 16.8	2442 17.2	2771 17.7	3157 18.0
	4.48	836 13.6	1056 14.3	1290 15.1	1551 15.7	1858 16.3	2180 16.9	2521 17.4	2884 17.8	3293 18.3
	4.83	868 13.7	1097 14.5	1340 15.2	1610 15.8	1931 16.5	2260 17.1	2589 17.5	2998 18.0	3407 18.4
5.17	899 13.9	1136 14.6	1388 15.4	1667 16.0	1999 16.6	2328 17.2	2657 17.7	3089 18.1		
5.52	929 14.0	1174 14.8	1431 15.5	1722 16.2	2065 16.8	2385 17.4	2725 17.8			

P45VPRO P45LVPRO	PRESSURE (Bar)	NOZZLES 1/8" + 3/32" L/H R(m)	NOZZLES 9/64" + 3/32" L/H R(m)	NOZZLES 5/32" + 3/32" L/H (+) R(m)	NOZZLES 11/64" + 3/32" L/H R(m)	NOZZLES 3/16" + 3/32" L/H R(m)	NOZZLES 3/16" + 1/8" L/H R(m)	NOZZLES 13/64" + 1/8" L/H R(m)	NOZZLES 7/32" + 1/8" L/H R(m)
TWO NOZZLES AND VANE TO HIGH RANGE	2.41	961 12.9	1124 13.5	1297 14.2	1492 14.7	1706 15.3	2005 15.9	2255 15.9	2521 16.5
	2.76	1029 13.4	1201 14.2	1388 15.1	1597 15.5	1824 16.0	2149 16.0	2419 16.5	2703 16.9
	3.10	1092 13.6	1274 14.3	1472 15.2	1694 15.8	1937 16.3	2283 16.3	2566 16.8	2873 17.4
	3.45	1151 13.7	1342 14.5	1549 15.4	1787 16.0	2044 16.5	2407 16.5	2703 17.1	3032 17.8
	3.79	1208 13.9	1408 14.6	1624 15.5	1874 16.2	2146 16.6	2521 16.6	2839 17.4	3180 18.1
	4.14	1263 14.0	1472 14.8	1697 15.7	1953 16.3	2239 16.8	2635 16.8	2953 17.5	3293
	4.48	1315 14.2	1533 14.9	1767 15.8	2028 16.5	2333 16.9	2748 16.9		
	4.83	1365 14.3	1590 15.1	1835 16.0	2101 16.6	2421 17.1	2839 17.1		
	5.17	1413 14.5	1647 15.2	1901 16.2	2171 16.8	2503 17.2	2930 17.2		
	5.52	1458 14.6	1701 15.4	1965 16.3	2242 16.9	2580 17.4	3009 17.4		

P45VPRO P45VLVPRO	PRESSURE (Bar)	NOZZLES 1/8" L/H R(m)	NOZZLES 9/64" L/H R(m)	NOZZLES 5/32" L/H (+) R(m)	NOZZLES 11/64" L/H R(m)	NOZZLES 3/16" L/H R(m)	NOZZLES 13/64" L/H R(m)	NOZZLES 7/32" L/H R(m)	NOZZLES 15/64" L/H R(m)	NOZZLES 1/4" L/H R(m)
ONE NOZZLE, PLUG AND VANE TO HIGH RANGE	2.41	609 13.4	772 14.1	945 15.0	1140 15.5	1354 15.9	1601 16.3	1862 16.7	2112 16.9	2407 17.5
	2.76	652 13.6	827 14.3	1011 15.2	1220 15.7	1449 16.2	1715 16.6	1999 17.1	2271 17.5	2589 18.1
	3.10	693 13.7	877 14.5	1072 15.4	1295 16.0	1540 16.5	1817 16.9	2124 17.7	2407 18.1	2748 18.7
	3.45	731 13.9	924 14.6	1131 15.5	1365 16.2	1626 16.8	1919 17.2	2248 18.1	2544 18.6	2907 19.2
	3.79	768 14.0	970 14.8	1186 15.7	1431 16.3	1708 16.9	2010 17.2	2362 18.4	2657 18.9	3043 19.5
	4.14	802 14.2	1013 14.9	1238 15.8	1492 16.5	1783 17.1	2101 17.7	2442 18.7	2771 19.2	3157 19.8
	4.48	836 14.3	1056 15.1	1290 16.0	1551 16.6	1858 17.2	2180 17.8	2521 18.9	2884 19.5	3293 20.1
	4.83	868 14.5	1097 15.2	1340 16.2	1610 16.8	1931 17.4	2260 18.0	2589 19.1	2998 19.8	3407 20.4
	5.17	899 14.6	1136 15.4	1388 16.3	1667 16.9	1999 17.5	2328 18.1	2657 19.2	3089 20.0	
	5.52	929 14.8	1174 15.5	1431 16.5	1722 17.1	2065 17.7	2385 18.3	2725 19.4		

Data obtained under ideal test conditions. It can be affected by wind, bad hydraulic conditions or other adverse factors. Highest point of the jet above the nozzle: 2.5 m (using standard nozzle 5/32" and a pressure of 3.45 Bar) Throw radius jets achieved with the 0.9m lift. Shaded areas not recommended. (*) Standard Nozzle.

L/H: Liters Per Minute
R(m): Throw Radius (meter)

Due to the large number of possible combinations of nozzles, only the most common ones are represented. To find information relating to other combinations, please advise factory.

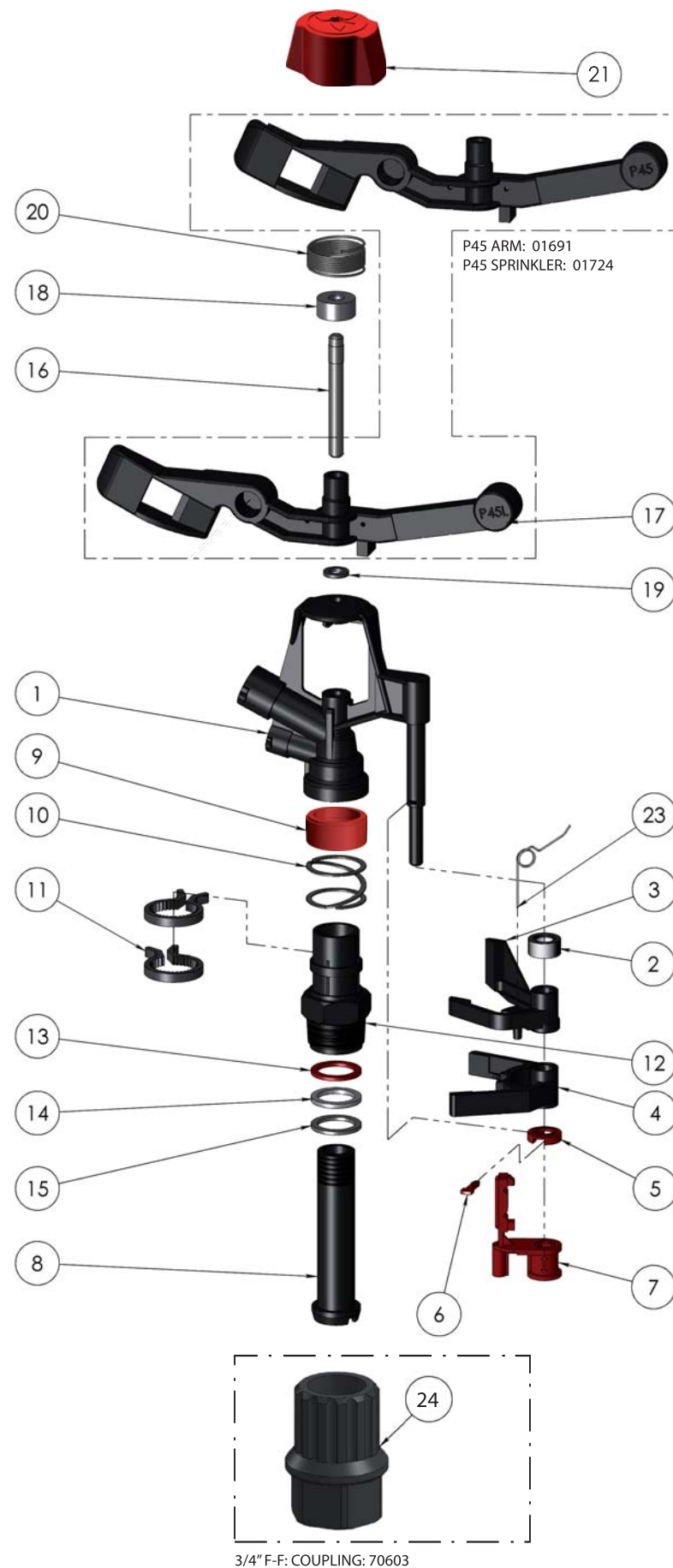
☐ P45L ◼ P45

WARRANTY AND EXCLUSIONS


The manufacturer guarantees its products for direct customer against any defects in materials or manufacture for a period of two years from the original date of purchase, only when the products have been used under normal operating conditions. The manufacturer assumes no responsibility for installation, removal or repairs carried out by unauthorised personnel. The manufacturer's liability under this warranty is limited to the replacement or repair of defective parts and the manufacturer does not accept responsibility for damages to crops or any other consequential damages deriving from defects in the products covered by this warranty.

THE PRESENT WARRANTY SUPERCEDES AND VOIDS ALL OTHER WARRANTIES, WHETHER EXPRESS OR IMPLIED, INCLUDING THOSE OF MERCHANTABILITY AND FITNESS FOR PARTICULAR PURPOSES OR ANY OTHER ATTRIBUTING LIABILITY TO THE MANUFACTURER.

No agent, employee or representative of the manufacturer is authorised to void, alter or add to the conditions contained in this warranty, nor to take responsibility for, nor to make guarantees not specified herein.



COMPONENT NUMBER	CODE	DESCRIPTION	MATERIAL	QUANTITY
1	01681	Sprinkler Body P45	POM	1
2	01695	Reversing Cap	High Density PE	1
3	01685	Upper Cam	POM	1
4	01686	Lower Cam	POM	1
5	01688	Pin Washer	POM	1
6	01689	Pin	POM	1
7	01690	Reversing Latch	POM	1
8	06517	Bearing Pin P45 / F44	POM	1
9	00256	Protective Bearing Body Lock	High Density PE	1
10	00018	Bearing Spring	Stainless Steel	1
11	01684	Cogged Sector	POM	2
12	01683	Bearing Body P45	POM	1
13	00252	Bearing Upper Washer	Anti Hydrolisis PU	1
14	06736	Bearing Intermediate Washer	High Density PE	1
15	07459	Bearing Lower Washer	NBR	1
16	06163	Fulcrum Pin	Stainless Steel	1
17	01692	Sprinkler Arm P45L	POM	1
18	06161	Swing Arm Hat	PE	1
19	06162	Swing Arm Support Washer	NBR	1
20	06183	Series Arm Spring 3/4"	Stainless Steel	1
21	00318	Protective Cap	High Density PE	1
23	01687	Protective Spring	Stainless Steel	1
24	70603	3/4" F-F Coupling	PA66 + Fiber Glass	1

Process/Manufacturer UNIRAIN	Size A3	Material	Code 01725PRO
	Scale 1:2	Name P45/45L Sprinkler	
PRIVATE AND CONFIDENTIAL THE INFORMATION CONTAINED ON THIS PLAN IS FOR UNIRAIN USE ONLY. FORBIDDEN CHANGE OR AMENDMENT OF VALUES OF THE PLAN WITHOUT A CONSENT IN WRITING.	26/06/09		
	E.G.B.		