

Unirain P45 - P45L

Part Circle Impact Sprinkler Low and Medium Flow Plastic



Application

Suitable for general agricultural use. Compact in design, it includes a sand-proof bearing system and reinforcing ribs on the sprinkler body. High resistance and durability, made of plastics and treated against the UV radiation. It is a very versatile sprinkler because of its reversing system and clip which allow the sprinkler switch from part to full circle and vice versa. Ideal for areas bordering or near elements that should not get wet.

Advantages

- Sand-proof bearing system and reinforcing ribs on its body.
- Perfect interior finish
- Its exclusive reversing system is protected against sand and can be disassembled in seconds without any tools.
- It can be assembled with one or two nozzles. sprinkler body adapted to be coupled to 3Q/2Q bayonet nozzle as well as 3PRN/3PSN thread nozzles.
- Three different types of water guide vane can be used to achieve the desired coverage and spray balance according to the available system pressure.

Technical specifications

- Double purpose impact sprinkler: part circle ranging from 25° to 325° with 10° steps, or full circle.
- 3/4" Male base thread
- MDual nozzle, main and secondary
- 23° nozzle trajectory angle.
- Pressure range: 20-80 PSI
- Nozzle range: 1/8"-1/4"
- Made of acetal resin with UV-protection treatment.
- Fulcrum pin and springs made of stainless steel.
- Expanded fulcrum pin upper end diameter for a better fitting into the sprinkler body.
- Color-coded anti abrasive acetal resin nozzles carved in millimetres and inches for clear identification.
- Reverse system protected
- Female thread adapter made of fiber glass reinforced PA.



P45/P45L



P45F/P45LF

	Pressure (psi)	Nozzles	Vanes
HIGH	60	3PRN 6 3FCN	30 V
MEDIUM	40	3PRN 6 3FCN	WITHOUT VANE
LOW	30	3PRN	30RV
VERY LOW	20	3PRN	30BV



P45 P45L	PRESSURE (PSI)	NOZZLES 1/8" + 3/32" GPM R(ft)		NOZZLES 9/64" + 3/32" GPM R(ft)		NOZZLES 5/32" + 3/32" GPM (+) R(ft)		NOZZLES 11/64" + 3/32" GPM R(ft)		NOZZLES 3/16" + 3/32" GPM R(ft)		NOZZLES 3/16" + 1/8" GPM R(ft)		NOZZLES 13/64" + 1/8" GPM R(ft)		NOZZLES 7/32" + 1/8" GPM R(ft)	
		TWO NOZZLES	20			3.74	39.0	4.31	40.7	4.96	42.0	5.66	43.3	6.65	43.3	7.47	44.9
	25			4.18	40.4	4.83	42.7	5.55	44.0	6.31	45.6	7.40	45.6	8.30	46.9	9.25	48.6
	30			4.58	42.7	5.28	44.6	6.07	45.9	6.93	47.6	8.15	47.6	9.15	48.9	10.20	50.5
	35	4.23	41.3	4.95	43.6	5.71	45.9	6.57	47.6	7.51	48.9	8.83	48.9	9.93	50.5	11.10	51.8
	40	4.53	42.0	5.29	44.6	6.11	46.9	7.03	48.6	8.03	49.9	9.46	49.9	10.65	51.5	11.90	53.1
	45	4.81	42.7	5.61	44.9	6.48	47.6	7.46	49.5	8.53	50.9	10.05	50.9	11.30	52.5	12.65	54.1
	50	5.07	43.0	5.91	45.6	6.82	47.9	7.87	49.9	9.00	51.8	10.60	51.8	11.90	53.5	13.35	55.1
	55	5.32	43.6	6.20	45.9	7.15	48.6	8.25	50.5	9.45	52.5	11.10	52.5	12.50	54.5	14.00	56.1
	60	5.56	44.0	6.48	46.6	7.47	48.9	8.60	50.9	9.86	53.1	11.60	53.1	13.00	55.1	14.50	56.4
	65	5.79	44.6	6.75	46.9	7.78	49.5	8.93	51.5	10.27	53.5	12.10	53.5	13.50	55.4	15.00	57.1
	70	6.01	44.9	7.00	47.6	8.08	49.9	9.25	51.8	10.66	54.1	12.50	54.1	14.00	56.1	15.45	57.4
	75	6.22	45.6	7.25	47.9	8.37	50.5	9.56	52.5	11.02	54.5	12.90	54.5	14.40	56.4	15.90	58.1
	80	6.42	45.9	7.49	48.6	8.65	50.9	9.87	53.1	11.36	55.1	13.25	55.1	14.80	57.1	16.30	58.4

P45P P45LP	PRESSURE (PSI)	NOZZLES 1/8" GPM R(ft)		NOZZLES 9/64" GPM R(ft)		NOZZLES 5/32" GPM (+) R(ft)		NOZZLES 11/64" GPM R(ft)		NOZZLES 3/16" GPM R(ft)		NOZZLES 13/64" GPM R(ft)		NOZZLES 7/32" GPM R(ft)		NOZZLES 15/64" GPM R(ft)		NOZZLES 1/4" GPM R(ft)	
		ONE NOZZLE AND PLUG	20			2.58	39.0	3.14	40.7	3.76	42.0	4.46	43.3	5.28	44.9	6.15	45.9	6.97	45.6
	25			2.88	40.4	3.52	42.7	4.24	44.0	5.00	45.6	5.90	46.9	6.85	48.6	7.80	46.9	8.90	47.6
	30			3.15	42.7	3.85	44.6	4.64	45.9	5.50	47.6	6.50	48.9	7.55	50.5	8.60	50.5	9.80	50.9
	35	2.68	41.3	3.40	43.6	4.16	45.9	5.02	47.6	5.96	48.9	7.05	50.5	8.20	51.8	9.30	52.5	10.60	53.1
	40	2.87	42.0	3.64	44.6	4.45	46.9	5.37	48.6	6.38	49.9	7.55	51.5	8.80	53.1	10.00	53.5	11.40	54.5
	45	3.05	42.7	3.86	44.9	4.72	47.6	5.70	49.5	6.78	50.9	8.00	52.5	9.35	54.1	10.60	55.1	12.10	56.1
	50	3.22	43.0	4.07	44.9	4.98	47.9	6.01	49.9	7.16	51.8	8.45	53.5	9.90	55.1	11.20	56.1	12.80	57.1
	55	3.38	43.6	4.27	45.9	5.22	48.6	6.30	50.5	7.52	52.5	8.85	54.5	10.40	56.1	11.70	57.1	13.40	58.1
	60	3.53	44.0	4.46	46.6	5.45	48.9	6.57	50.9	7.85	53.1	9.25	55.1	10.75	56.4	12.20	58.1	13.90	59.1
	65	3.68	44.6	4.65	46.9	5.68	49.5	6.83	51.5	8.18	53.5	9.60	55.4	11.10	57.1	12.70	58.4	14.50	60.0
	70	3.82	44.9	4.83	47.6	5.90	49.9	7.09	51.8	8.50	54.1	9.95	56.1	11.40	57.4	13.20	59.1	15.00	60.4
	75	3.96	45.6	5.00	47.9	6.11	50.5	7.34	52.5	8.80	54.5	10.25	56.4	11.70	58.1	13.60	59.4		
	80	4.09	45.9	5.17	48.6	6.30	50.9	7.58	53.1	9.09	55.1	10.50	57.1	12.00	58.4				

P45V P45LV	PRESSURE (PSI)	NOZZLES 1/8" + 3/32" GPM R(ft)		NOZZLES 9/64" + 3/32" GPM R(ft)		NOZZLES 5/32" + 3/32" GPM (+) R(ft)		NOZZLES 11/64" + 3/32" GPM R(ft)		NOZZLES 3/16" + 3/32" GPM R(ft)		NOZZLES 3/16" + 1/8" GPM R(ft)		NOZZLES 13/64" + 1/8" GPM R(ft)		NOZZLES 7/32" + 1/8" GPM R(ft)	
		TWO NOZZLES AND VANE TO HIGH RANGE	35	4.23	42.3	4.95	44.3	5.71	46.6	6.57	48.2	7.51	50.2	8.83	50.2	9.93	52.2
	40	4.53	44.0	5.29	46.6	6.11	49.5	7.03	50.9	8.03	52.5	9.46	52.5	10.65	54.1	11.90	55.4
	45	4.81	44.6	5.61	46.9	6.48	49.9	7.46	51.8	8.53	53.5	10.05	53.5	11.30	55.1	12.65	57.1
	50	5.07	44.9	5.91	47.6	6.82	50.5	7.87	52.5	9.00	54.1	10.60	54.1	11.90	56.1	13.35	58.4
	55	5.32	45.6	6.20	47.9	7.15	50.9	8.25	53.1	9.45	54.5	11.10	54.5	12.50	57.1	14.00	59.4
	60	5.56	45.9	6.48	48.6	7.47	51.5	8.60	53.5	9.86	55.1	11.60	55.1	13.00	57.4	14.50	60.4
	65	5.79	46.6	6.75	48.9	7.78	51.8	8.93	54.1	10.27	55.4	12.10	55.4	13.50	58.1	15.00	61.0
	70	6.01	46.9	7.00	49.5	8.08	52.5	9.25	54.5	10.66	56.1	12.50	56.1	14.00	58.4	15.45	61.4
	75	6.22	47.6	7.25	49.9	8.37	53.1	9.56	55.1	11.02	56.4	12.90	56.4	14.40	59.1	15.90	62.0
	80	6.42	47.9	7.49	50.5	8.65	53.5	9.87	55.4	11.36	57.1	13.25	57.1	14.80	59.4	16.30	62.7

P45PV P45PLV	PRESSURE (PSI)	NOZZLES 1/8" GPM R(ft)		NOZZLES 9/64" GPM R(ft)		NOZZLES 5/32" GPM (+) R(ft)		NOZZLES 11/64" GPM R(ft)		NOZZLES 3/16" GPM R(ft)		NOZZLES 13/64" GPM R(ft)		NOZZLES 7/32" GPM R(ft)		NOZZLES 15/64" GPM R(ft)		NOZZLES 1/4" GPM R(ft)	
		ONE NOZZLE, PLUG AND VANE TO HIGH RANGE	35	2.68	44.0	3.40	46.3	4.16	49.2	5.02	50.9	5.96	52.2	7.05	53.5	8.20	54.8	9.30	55.4
	40	2.87	44.6	3.64	46.9	4.45	49.9	5.37	51.8	6.38	53.5	7.55	54.5	8.80	56.1	10.00	57.4	11.40	59.4
	45	3.05	44.9	3.86	47.6	4.72	50.5	5.70	52.5	6.78	54.1	8.00	55.5	9.35	58.1	10.60	59.4	12.10	61.4
	50	3.22	45.6	4.07	47.9	4.98	50.9	6.01	53.1	7.16	54.5	8.45	56.4	9.90	59.4	11.20	61.0	12.80	63.0
	55	3.38	45.9	4.27	48.6	5.22	51.5	6.30	53.5	7.52	55.1	8.85	57.4	10.40	60.4	11.70	62.0	13.40	64.0
	60	3.53	46.6	4.46	48.9	5.45	51.8	6.57	54.1	7.85	55.4	9.25	58.1	10.75	61.4	12.20	63.0	13.90	65.0
	65	3.68	46.9	4.65	49.5	5.68	52.5	6.83	54.5	8.18	56.1	9.60	58.4	11.10	62.0	12.70	64.0	14.50	65.9
	70	3.82	47.6	4.83	49.9	5.90	53.1	7.09	55.1	8.50	56.4	9.95	59.1	11.40	62.7	13.20	65.0	15.00	66.9
	75	3.96	47.9	5.00	50.5	6.11	53.5	7.34	55.4	8.80	57.1	10.25	59.4	11.70	63.0	13.60	65.6		
	80	4.09	48.6	5.17	50.9	6.30	54.1	7.58	56.4	9.09	58.1	10.50	60.0	12.00	63.6				

Data obtained under ideal test conditions. It can be affected by wind, bad hydraulic conditions or other adverse factors.
Highest point of the jet above the nozzle: 2.8 m (using standard nozzle 5 / 32" to 35.2 MCA)
Throw radius jets achieved with the 0.9m lift. Shaded areas not recommended.
(*) Standard Nozzle.

PSI: Pounds per Square Inch
GPM: Gallons Per Minute
R(ft): Throw Radius in feet

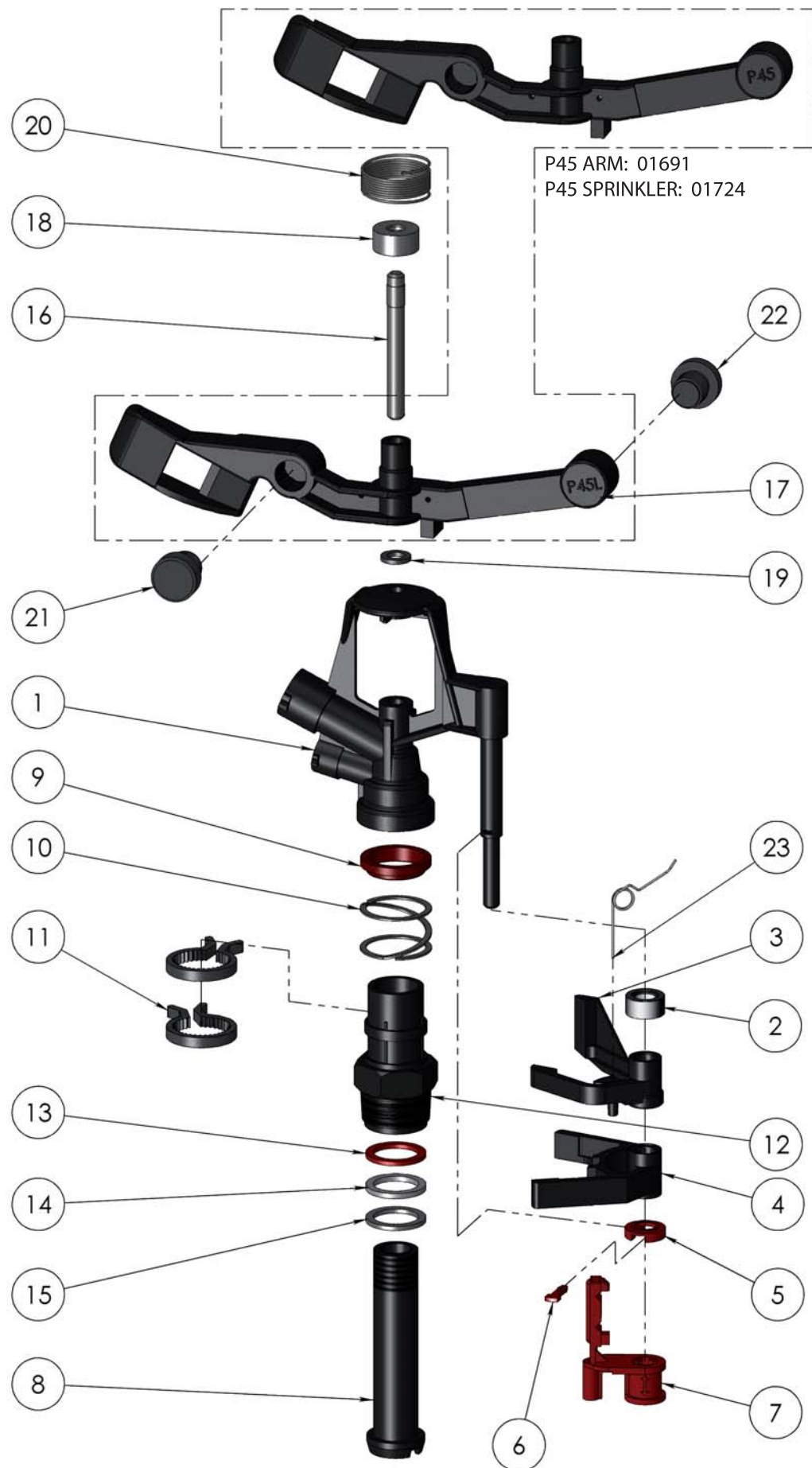
□ P45L ■ P45

WARRANTY AND EXCLUSIONS


The manufacturer guarantees its products for direct customer against any defects in materials or manufacture for a period of two years from the original date of purchase, only when the products have been used under normal operating conditions. The manufacturer assumes no responsibility for installation, removal or repairs carried out by unauthorised personnel. The manufacturer's liability under this warranty is limited to the replacement or repair of defective parts and the manufacturer does not accept responsibility for damages to crops or any other consequential damages deriving from defects in the products covered by this warranty.

THE PRESENT WARRANTY SUPERCEDES AND VOIDS ALL OTHER WARRANTIES, WHETHER EXPRESS OR IMPLIED, INCLUDING THOSE OF MERCHANTABILITY AND FITNESS FOR PARTICULAR PURPOSES OR ANY OTHER ATTRIBUTING LIABILITY TO THE MANUFACTURER.

No agent, employee or representative of the manufacturer is authorised to void, alter or add to the conditions contained in this warranty, nor to take responsibility for, nor to make guarantees not specified herein.



COMPONENT NUMBER	CODE	DESCRIPTION	MATERIAL	QUANTITY
1	01681	Sprinkler Body P45	POM	1
2	01695	Reversing Cap	High Density PE	1
3	01685	Upper Cam	POM	1
4	01686	Lower Cam	POM	1
5	01688	Pin Washer	POM	1
6	01689	Pin	POM	1
7	01690	Inverter Latch	POM	1
8	06517	Bearing Pin P45 / F44	POM	1
9	00255	Bearing Body Lock	High Density PE	1
10	00018	Bearing Spring	Stainless Steel	1
11	01684	Cogged Sector	POM	2
12	01683	Bearing Body P45	POM	1
13	00252	Bearing Upper Washer	Anti Hydrolisis PU	1
14	06736	Bearing Intermediate Washer	High Density PE	1
15	07459	Bearing Lower Washer	NBR	1
16	06163	Fulcrum Pin	Stainless Steel	1
17	01692	Sprinkler Arm P45L	POM	1
18	06161	Swing Arm Cap	PE	1
19	06162	Arm Support Washer	NBR	1
20	06183	Arm Spring Series 3/4"	Stainless Steel	1
21	00314	Front Counterweight	ZAMAK	1
22	00316	Back Counterweight	ZAMAK	1
23	01687	Reversing Spring	Stainless Steel	1

Process/Manufacturer UNIRAIN	Size A3	Material	Code 01725
	Scale 1:2	Name P45L Sprinkler	
PRIVATE AND CONFIDENTIAL THE INFORMATION CONTAINED ON THIS PLAN IS FOR UNIRAIN USE ONLY. FORBIDDEN CHANGE OR AMENDMENT OF VALUES OF THE PLAN WITHOUT A CONSENT IN WRITING.	26/06/09		
	E.G.B.		