

Unirain F46L- F46

Full Circle Impact Sprinkler Low and Medium flow Plastic



Application

Designed for general agricultural use and, because of its low cost, it is particularly suitable for solid sets where the amount of sprinklers per hectare is high.

Advantages

- It features a sand-proof bearing system and reinforcing ribs on its body.
- Perfect inner finishing.
- It can be assembled with one or two nozzles. Sprinkler body accepts two different model nozzles: 3Q Bayonet & thread nozzle.
- This model allows using three different vanes can be used to achieve the desired coverage and spray balance according to the available system pressure.

Technical specification

- Full circle impact sprinkler.
- 3/4" base thread male or female(F46F)
- Main and secondary nozzle
- 23° nozzle trajectory angle
- Pressure range: 20-80 PSI
- Nozzle range: 7/64"-7/32"
- Made of acetal resin with UV-protection treatment.
- Fulcrum pin and springs made of stainless steel.
- Expanded fulcrum pin upper end diameter for a better fitting into the sprinkler body.
- Color-coded anti abrasive acetal resin nozzles carved in millimetres and inches for a better identification.
- Backturn lock between the sprinkler body and the bearing spring.
- F46L (Low flow model)



F46

F46F

	Pressure (psi)	Nozzles	Vanes
HIGH	60	3PRN ó 3FCN	30 V
MEDIUM	40	3PRN ó 3FCN	WITHOUT VANE
LOW	30	3PRN	30RV
VERY LOW	20	3PRN	30BV



F46L F46	PRESSURE (PSI)	NOZZLES 7/64" + 3/32"		NOZZLES 1/8" + 3/32"		NOZZLES 9/64" + 3/32"		NOZZLES 5/32" + 3/32"		NOZZLES 11/64" + 3/32"		NOZZLES 3/16" + 3/32"		NOZZLES 3/16" + 1/8"		NOZZLES 13/64" + 1/8"		NOZZLES 7/32" + 1/8"	
		GPM	R(ft)	GPM	R(ft)	GPM	R(ft)	GPM	R(ft)	GPM	R(ft)	GPM	R(ft)	GPM	R(ft)	GPM	R(ft)	GPM	R(ft)
TWO NOZZLES	20	2.71	37.1	3.18	38.1	3.74	39.0	4.31	40.7	4.96	42.0	5.66	43.3	6.65	43.3	7.47	44.9	8.33	45.9
	25	3.03	38.1	3.55	39.0	4.18	40.4	4.83	42.7	5.55	44.0	6.31	45.6	7.40	45.6	8.30	46.9	9.25	48.6
	30	3.32	38.4	3.90	40.4	4.58	42.7	5.28	44.6	6.07	45.9	6.93	47.6	8.15	47.6	9.15	48.9	10.20	50.5
	35	3.60	39.0	4.23	41.3	4.95	43.6	5.71	45.9	6.57	47.6	7.51	48.9	8.83	48.9	9.93	50.5	11.10	51.8
	40	3.85	39.4	4.53	42.0	5.29	44.6	6.11	46.9	7.03	48.6	8.03	49.9	9.46	49.9	10.65	51.5	11.90	53.1
	45	4.08	40.0	4.81	42.7	5.61	44.9	6.48	47.6	7.46	49.5	8.53	50.9	10.05	50.9	11.30	52.5	12.65	54.1
	50	4.30	40.4	5.07	43.0	5.91	45.6	6.82	47.9	7.87	49.9	9.00	51.8	10.60	51.8	11.90	53.5	13.35	55.1
	55	4.51	41.0	5.32	43.6	6.20	45.9	7.15	48.6	8.25	50.5	9.45	52.5	11.10	52.5	12.50	54.5	14.00	56.1
	60	4.71	41.3	5.56	44.0	6.48	46.6	7.47	48.9	8.60	50.9	9.86	53.1	11.60	53.1	13.00	55.1	14.50	56.4
	65	4.90	42.0	5.79	44.6	6.75	46.9	7.78	49.5	8.93	51.5	10.27	53.5	12.10	53.5	13.50	55.4	15.00	57.1
	70	5.09	42.7	6.01	44.9	7.00	47.6	8.08	49.9	9.25	51.8	10.66	54.1	12.50	54.1	14.00	56.1	15.45	57.4
	75	5.26	43.0	6.22	45.6	7.25	47.9	8.37	50.5	9.56	52.5	11.02	54.5	12.90	54.5	14.40	56.4	15.90	58.1
	80	5.43	43.0	6.42	45.9	7.49	48.6	8.65	50.9	9.87	53.1	11.36	55.1	13.25	55.1	14.80	57.1	16.30	58.4

F46LP F46P	PRESSURE (PSI)	NOZZLES 7/64"		NOZZLES 1/8"		NOZZLES 9/64"		NOZZLES 5/32"		NOZZLES 11/64"		NOZZLES 3/16"		NOZZLES 13/64"		NOZZLES 7/32"	
		GPM	R(ft)	GPM	R(ft)	GPM	R(ft)	GPM	R(ft)	GPM	R(ft)	GPM	R(ft)	GPM	R(ft)	GPM	R(ft)
ONE NOZZLE AND PLUG	20	1.54	37.1	2.02	38.1	2.57	39.0	3.14	40.7	3.79	42.0	4.49	43.3	5.31	44.9	6.16	45.9
	25	1.73	38.1	2.25	39.0	2.88	40.4	3.52	42.7	4.24	44.0	5.00	45.6	5.90	46.9	6.85	48.6
	30	1.89	38.4	2.47	40.4	3.15	42.7	3.85	44.6	4.64	45.9	5.50	47.6	6.50	48.9	7.55	50.5
	35	2.05	39.0	2.68	41.3	3.40	43.6	4.16	45.9	5.02	47.6	5.96	48.9	7.05	50.5	8.20	51.8
	40	2.19	39.4	2.87	42.0	3.64	44.6	4.45	46.9	5.37	48.6	6.38	49.9	7.55	51.5	8.80	53.1
	45	2.32	40.0	3.05	42.7	3.86	44.9	4.72	47.6	5.70	49.5	6.78	50.9	8.00	52.5	9.35	54.1
	50	2.45	40.4	3.22	43.0	4.07	44.9	4.98	47.9	6.01	49.9	7.16	51.8	8.45	53.5	9.90	55.1
	55	2.57	41.0	3.38	43.6	4.27	45.9	5.22	48.6	6.30	50.5	7.52	52.5	8.85	54.5	10.40	56.1
	60	2.68	41.3	3.53	44.0	4.46	46.6	5.45	48.9	6.57	50.9	7.85	53.1	9.25	55.1	10.75	56.4
	65	2.79	42.0	3.68	44.6	4.65	46.9	5.68	49.5	6.83	51.5	8.18	53.5	9.60	55.4	11.10	57.1
	70	2.90	42.7	3.82	44.9	4.83	47.6	5.90	49.9	7.09	51.8	8.50	54.1	9.95	56.1	11.40	57.4
	75	3.00	43.0	3.96	45.6	5.00	47.9	6.11	50.5	7.34	52.5	8.80	54.5	10.25	56.4	11.70	58.1
	80	3.10	43.0	4.09	45.9	5.17	48.6	6.30	50.9	7.58	53.1	9.09	55.1	10.50	57.1	12.00	58.4

F46LV F46V	PRESSURE (PSI)	NOZZLES 7/64" + 3/32"		NOZZLES 1/8" + 3/32"		NOZZLES 9/64" + 3/32"		NOZZLES 5/32" + 3/32"		NOZZLES 11/64" + 3/32"		NOZZLES 3/16" + 3/32"		NOZZLES 3/16" + 1/8"		NOZZLES 13/64" + 1/8"		NOZZLES 7/32" + 1/8"	
		GPM	R(ft)	GPM	R(ft)	GPM	R(ft)	GPM	R(ft)	GPM	R(ft)	GPM	R(ft)	GPM	R(ft)	GPM	R(ft)	GPM	R(ft)
TWO NOZZLES, AND VANE TO HIGH RANGE	35	3.60	40.4	4.23	42.3	4.95	44.3	5.71	46.6	6.57	48.2	7.51	50.2	8.83	50.2	9.93	52.2	11.10	54.1
	40	3.85	41.3	4.53	44.0	5.29	46.6	6.11	49.5	7.03	50.9	8.03	52.5	9.46	52.5	10.65	54.1	11.90	55.4
	45	4.08	42.0	4.81	44.6	5.61	46.9	6.48	49.9	7.46	51.8	8.53	53.5	10.05	53.5	11.30	55.1	12.65	57.1
	50	4.30	42.7	5.07	44.9	5.91	47.6	6.82	50.5	7.87	52.5	9.00	54.1	10.60	54.1	11.90	56.1	13.35	58.4
	55	4.51	43.0	5.32	45.6	6.20	47.9	7.15	50.9	8.25	53.1	9.45	54.5	11.10	54.5	12.50	57.1	14.00	59.4
	60	4.71	43.6	5.56	45.9	6.48	48.6	7.47	51.5	8.60	53.5	9.86	55.1	11.60	55.1	13.00	57.4	14.50	60.4
	65	4.90	44.0	5.79	46.6	6.75	48.9	7.78	51.8	8.93	54.1	10.27	55.4	12.10	55.4	13.50	58.1	15.00	61.0
	70	5.09	44.6	6.01	46.9	7.00	49.5	8.08	52.5	9.25	54.5	10.66	56.1	12.50	56.1	14.00	58.4	15.45	61.4
	75	5.26	44.9	6.22	47.6	7.25	49.9	8.37	53.1	9.56	55.1	11.02	56.4	12.90	56.4	14.40	59.1	15.90	62.0
	80	5.43	45.6	6.42	47.9	7.49	50.5	8.65	53.5	9.87	55.4	11.36	57.1	13.25	57.1	14.80	59.4	16.30	62.7

F46LPV F46PV	PRESSURE (PSI)	NOZZLES 7/64"		NOZZLES 1/8"		NOZZLES 9/64"		NOZZLES 5/32"		NOZZLES 11/64"		NOZZLES 3/16"		NOZZLES 13/64"		NOZZLES 7/32"	
		GPM	R(ft)	GPM	R(ft)	GPM	R(ft)	GPM	R(ft)	GPM	R(ft)	GPM	R(ft)	GPM	R(ft)	GPM	R(ft)
ONE NOZZLE, PLUG AND VANE TO HIGH RANGE	35	2.05	40.4	2.68	42.3	3.40	44.3	4.16	46.6	5.02	48.2	5.96	50.2	7.05	52.2	8.20	54.1
	40	2.19	41.3	2.87	44.0	3.64	46.6	4.45	49.5	5.37	50.9	6.38	52.5	7.55	54.1	8.80	55.4
	45	2.32	42.0	3.05	44.6	3.86	46.9	4.72	49.9	5.70	51.8	6.78	53.5	8.00	55.1	9.35	57.1
	50	2.45	42.7	3.22	44.9	4.07	47.6	4.98	50.5	6.01	52.5	7.16	54.1	8.45	56.1	9.90	58.4
	55	2.57	43.0	3.38	45.6	4.27	47.9	5.22	50.9	6.30	53.1	7.52	54.5	8.85	57.1	10.40	59.4
	60	2.68	43.6	3.53	45.9	4.46	48.6	5.45	51.5	6.57	53.5	7.85	55.1	9.25	57.4	10.75	60.4
	65	2.79	44.0	3.68	46.6	4.65	48.9	5.68	51.8	6.83	54.1	8.18	55.4	9.60	58.1	11.10	61.0
	70	2.90	44.6	3.82	46.9	4.83	49.5	5.90	52.5	7.09	54.5	8.50	56.1	9.95	58.4	11.40	61.4
	75	3.00	44.9	3.96	47.6	5.00	49.9	6.11	53.1	7.34	55.1	8.80	56.4	10.25	59.1	11.70	62.0
	80	3.10	45.6	4.09	47.9	5.17	50.5	6.30	53.5	7.58	55.4	9.09	57.1	10.50	59.4	12.00	62.7

Data obtained under ideal test conditions. It can be affected by wind, bad hydraulic conditions or other adverse factors.
 Highest point of the jet above the nozzle: 2.5 m (using standard nozzle 11 / 64" to 35.2 MCA)
 Throw radius jets achieved with the 0.9m lift. Shaded areas not recommended.
 (*) Standard Nozzle.

PSI: Pounds per Square Inch
 GPM: Gallons Per Minute
 R(ft): Throw Radius in feet

Due to the large number of possible combinations of nozzles, only the most common ones are represented.
 To find information relating to other combinations, please advise factory.

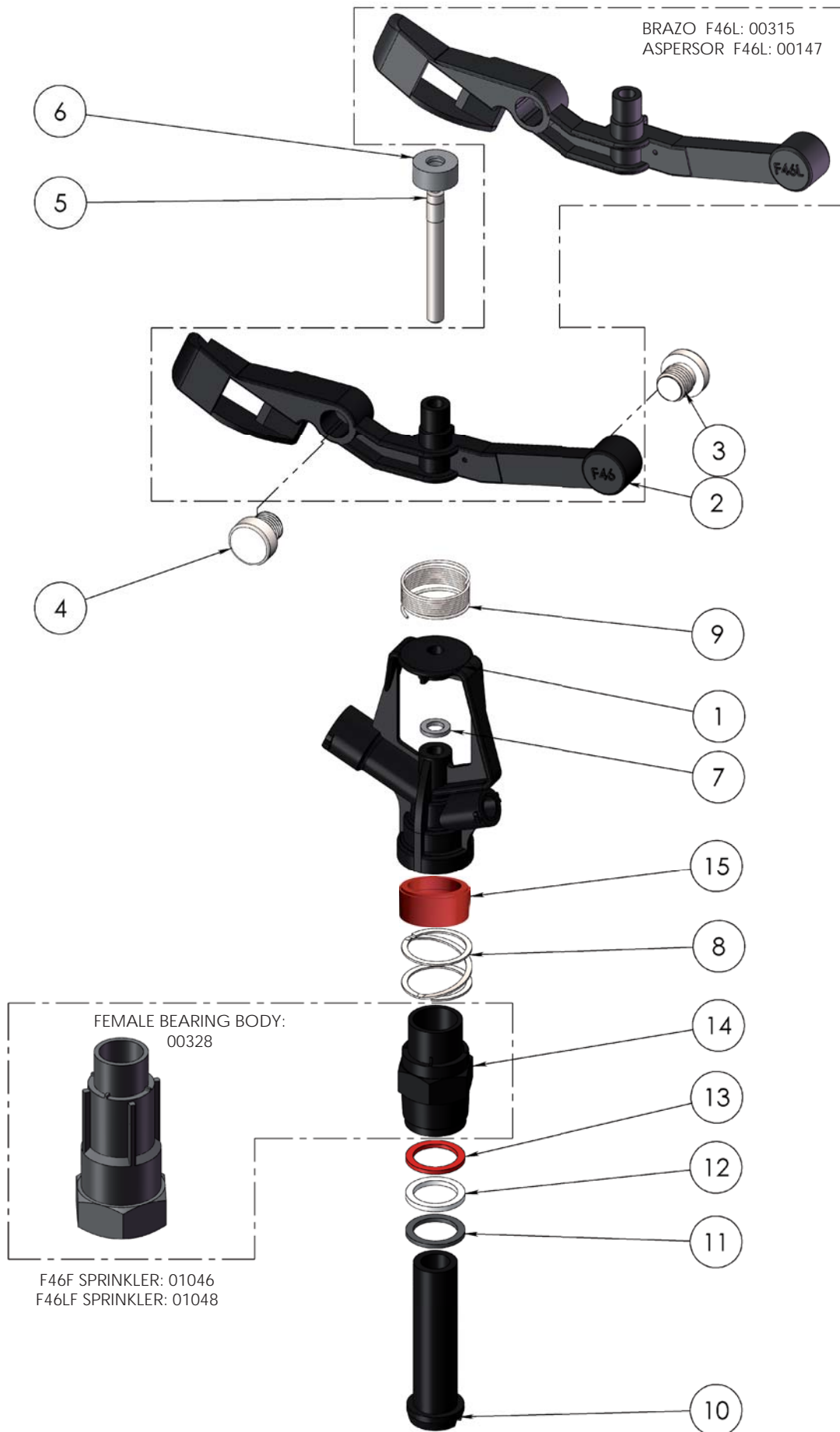


WARRANTY AND EXCLUSIONS

The manufacturer guarantees its products for direct customer against any defects in materials or manufacture for a period of two years from the original date of purchase, only when the products have been used under normal operating conditions. The manufacturer assumes no responsibility for installation, removal or repairs carried out by unauthorised personnel. The manufacturer's liability under this warranty is limited to the replacement or repair of defective parts and the manufacturer does not accept responsibility for damages to crops or any other consequential damages deriving from defects in the products covered by this warranty.

THE PRESENT WARRANTY SUPERCEDES AND VOIDS ALL OTHER WARRANTIES, WHETHER EXPRESS OR IMPLIED, INCLUDING THOSE OF MERCHANTABILITY AND FITNESS FOR PARTICULAR PURPOSES OR ANY OTHER ATTRIBUTING LIABILITY TO THE MANUFACTURER.

No agent, employee or representative of the manufacturer is authorised to void, alter or add to the conditions contained in this warranty, nor to take responsibility for, nor to make guarantees not specified herein.



COMPONENT NUMBER	CODE	DESCRIPTION	MATERIAL	QUANTITY
1	00310	F46 Sprinkler Body	POM	1
2	00311	F46 Sprinkler Arm	POM	1
3	00316	Back Counterweight	ZAMAK	1
4	00314	Front Counterweight	ZAMAK	1
5	06163	Fulcrum Pin	Stainless Steel	1
6	06161	Swing Arm Cap	PE	1
7	06162	Swing Arm Support Washer	NBR	1
8	00018	Bearing Spring	Stainless Steel	1
9	06183	3/4" Series Arm Spring	Stainless Steel	1
10	00313	Bearing Pin F46	POM	1
11	07459	Bearing Lower Washer	NBR	1
12	06736	Bearing Intermediate Washer	High Density PE	1
13	00252	Bearing Upper Washer	Anti Hydrolisis PU	1
14	00312	F46 Bearing Body	POM	1
15	00256	Bearing Body Lock	High Density PE	1

Notes

Process/Manufacturer Unirain	Size A3	Material	Code 00146
Assembly	Scale 1: 2	Name F46 Sprinkler	
PRIVATE AND CONFIDENTIAL THE INFORMATION CONTAINED ON THIS PLAN IS FOR UNIRAIN USE ONLY. FORBIDDEN CHANGE OR AMENDMENT OF VALUES OF THE PLAN WITHOUT A CONSENT IN WRITING.		21/05/09 E.G.B.	