

Unirain F46L- F46

Full Circle Impact Sprinkler Low and Medium flow Plastic



Application

Designed for general agricultural use and, because of its low cost, it is particularly suitable for solid sets where the amount of sprinklers per hectare is high.

Advantages

- It features a sand-proof bearing system and reinforcing ribs on its body.
- Perfect inner finishing.
- It can be assembled with one or two nozzles. Sprinkler body accepts two different model nozzles: 3Q Bayonet & thread nozzle.
- This model allows using three different vanes can be used to achieve the desired coverage and spray balance according to the available system pressure.

Technical specification

- Full circle impact sprinkler.
- 3/4" base thread male or female(F46F)
- Main and secondary nozzle
- 23° nozzle trajectory angle
- Pressure range: 1.38 - 5.52 Bar
- Nozzle range: 7/64" (2,78mm) - 7/32" (5,56mm)
- Made of acetal resin with UV-protection treatment.
- Fulcrum pin and springs made of stainless steel.
- Expanded fulcrum pin upper end diameter for a better fitting into the sprinkler body.
- Color-coded anti abrasive acetal resin nozzles carved in millimetres and inches for a better identification.
- Backturn lock between the sprinkler body and the bearing spring.
- F46L (Low flow model)



	Pressure (bar)	Nozzles	Vanes
HIGH	4.14	3PRN 6 3FCN	30 V
MEDIUM	2.76	3PRN 6 3FCN	WITHOUT VANE
LOW	2.10	3PRN	30RV
VERY LOW	1.38	3PRN	30BV



F46L F46	PRESSURE (Bar)	NOZZLES 7/64" + 3/32"		NOZZLES 1/8" + 3/32"		NOZZLES 9/64" + 3/32"		NOZZLES 5/32" + 3/32"		NOZZLES 11/64" + 3/32"		NOZZLES 3/16" + 3/32"		NOZZLES 3/16" + 1/8"		NOZZLES 13/64" + 1/8"		NOZZLES 7/32" + 1/8"	
		L/H	R(m)	L/H	R(m)	L/H	R(m)	L/H (+)	R(m)	L/H	R(m)	L/H	R(m)	L/H	R(m)	L/H	R(m)	L/H	R(m)
TWO NOZZLES	1.38	615	11.3	723	11.6	849	11.9	979	12.4	1126	12.8	1285	13.2	1511	13.2	1697	13.7	1892	14.0
	1.72	688	11.6	806	11.9	949	12.3	1097	13.0	1261	13.4	1433	13.9	1681	13.9	1885	14.3	2101	14.8
	2.07	754	11.7	886	12.3	1040	13.0	1199	13.6	1379	14.0	1574	14.5	1851	14.5	2078	14.9	2317	15.4
	2.41	818	11.9	961	12.6	1124	13.3	1297	14.0	1492	14.5	1706	14.9	2005	14.9	2255	15.4	2521	15.8
	2.76	874	12.0	1029	12.8	1201	13.6	1388	14.3	1597	14.8	1824	15.2	2149	15.2	2419	15.7	2703	16.2
	3.10	927	12.2	1092	13.0	1274	13.7	1472	14.5	1694	15.1	1937	15.5	2283	15.5	2566	16.0	2873	16.5
	3.45	977	12.3	1151	13.1	1342	13.9	1549	14.6	1787	15.2	2044	15.8	2407	15.8	2703	16.3	3032	16.8
	3.79	1024	12.5	1208	13.3	1408	14.0	1624	14.8	1874	15.4	2146	16.0	2521	16.0	2839	16.6	3180	17.1
	4.14	1070	12.6	1263	13.4	1472	14.2	1697	14.9	1953	15.5	2239	16.2	2635	16.2	2953	16.8	3293	17.2
	4.48	1113	12.8	1315	13.6	1533	14.3	1767	15.1	2028	15.7	2333	16.3	2748	16.3	3066	16.9	3407	17.4
	4.83	1156	13.0	1365	13.7	1590	14.5	1835	15.2	2101	15.8	2421	16.5	2839	16.5	3180	17.1	3509	17.5
	5.17	1195	13.1	1413	13.9	1647	14.6	1901	15.4	2171	16.0	2503	16.6	2930	16.6	3271	17.2	3611	17.7
5.52	1233	13.1	1458	14.0	1701	14.8	1965	15.5	2242	16.2	2580	16.8	3009	16.8	3361	17.4	3702	17.8	

F46LP F46P	PRESSURE (Bar)	NOZZLES 7/64"		NOZZLES 1/8"		NOZZLES 9/64"		NOZZLES 5/32"		NOZZLES 11/64"		NOZZLES 3/16"		NOZZLES 13/64"		NOZZLES 7/32"	
		L/H	R(m)	L/H	R(m)	L/H	R(m)	L/H (+)	R(m)	L/H	R(m)	L/H	R(m)	L/H	R(m)	L/H	R(m)
ONE NOZZLE AND PLUG	1.38	350	11.3	458	11.6	584	11.9	714	12.4	861	12.8	1020	13.2	1205	13.7	1400	14.0
	1.72	393	11.6	511	11.9	654	12.3	799	13.0	963	13.4	1136	13.9	1340	14.3	1556	14.8
	2.07	429	11.7	561	12.3	715	13.0	874	13.6	1054	14.0	1249	14.5	1476	14.9	1715	15.4
	2.41	466	11.9	609	12.6	772	13.3	945	14.0	1140	14.5	1354	14.9	1601	15.4	1862	15.8
	2.76	497	12.0	652	12.8	827	13.6	1011	14.3	1220	14.8	1449	15.2	1715	15.7	1999	16.2
	3.10	527	12.2	693	13.0	877	13.7	1072	14.5	1295	15.1	1540	15.5	1817	16.0	2124	16.5
	3.45	556	12.3	731	13.1	924	13.9	1131	14.6	1365	15.2	1626	15.8	1919	16.3	2248	16.8
	3.79	584	12.5	768	13.3	970	14.0	1186	14.8	1431	15.4	1708	16.0	2010	16.6	2362	17.1
	4.14	609	12.6	802	13.4	1013	14.2	1238	14.9	1492	15.5	1783	16.2	2101	16.8	2442	17.2
	4.48	634	12.8	836	13.6	1056	14.3	1290	15.1	1551	15.7	1858	16.3	2180	16.9	2521	17.4
	4.83	659	13.0	868	13.7	1097	14.5	1340	15.2	1610	15.8	1931	16.5	2260	17.1	2589	17.5
	5.17	681	13.1	899	13.9	1136	14.6	1388	15.4	1667	16.0	1999	16.6	2328	17.2	2657	17.7
5.52	704	13.1	929	14.0	1174	14.8	1431	15.5	1722	16.2	2065	16.8	2385	17.4	2725	17.8	

F46LV F46V	PRESSURE (Bar)	NOZZLES 7/64" + 3/32"		NOZZLES 1/8" + 3/32"		NOZZLES 9/64" + 3/32"		NOZZLES 5/32" + 3/32"		NOZZLES 11/64" + 3/32"		NOZZLES 3/16" + 3/32"		NOZZLES 3/16" + 1/8"		NOZZLES 13/64" + 1/8"		NOZZLES 7/32" + 1/8"	
		L/H	R(m)	L/H	R(m)	L/H	R(m)	L/H (+)	R(m)	L/H	R(m)	L/H	R(m)	L/H	R(m)	L/H	R(m)	L/H	R(m)
TWO NOZZLES, AND VANE TO HIGH RANGE	2.41	818	12.3	961	12.9	1124	13.5	1297	14.2	1492	14.7	1706	15.3	2005	15.3	2255	15.9	2521	16.5
	2.76	874	12.6	1029	13.4	1201	14.2	1388	15.1	1597	15.5	1824	16.0	2149	16.0	2419	16.5	2703	16.9
	3.10	927	12.8	1092	13.6	1274	14.3	1472	15.2	1694	15.8	1937	16.3	2283	16.3	2566	16.8	2873	17.4
	3.45	977	13.0	1151	13.7	1342	14.5	1549	15.4	1787	16.0	2044	16.5	2407	16.5	2703	17.1	3032	17.8
	3.79	1024	13.1	1208	13.9	1408	14.6	1624	15.5	1874	16.2	2146	16.6	2521	16.6	2839	17.4	3180	18.1
	4.14	1070	13.3	1263	14.0	1472	14.8	1697	15.7	1953	16.3	2239	16.8	2635	16.8	2953	17.5	3293	18.4
	4.48	1113	13.4	1315	14.2	1533	14.9	1767	15.8	2028	16.5	2333	16.9	2748	16.9	3066	17.7	3407	18.6
	4.83	1156	13.6	1365	14.3	1590	15.1	1835	16.0	2101	16.6	2421	17.1	2839	17.1	3180	17.8	3509	18.7
	5.17	1195	13.7	1413	14.5	1647	15.2	1901	16.2	2171	16.8	2503	17.2	2930	17.2	3271	18.0	3611	18.9
	5.52	1233	13.9	1458	14.6	1701	15.4	1965	16.3	2242	16.9	2580	17.4	3009	17.4	3361	18.1	3702	19.1

F46LPV F46PV	PRESSURE (Bar)	NOZZLES 7/64"		NOZZLES 1/8"		NOZZLES 9/64"		NOZZLES 5/32"		NOZZLES 11/64"		NOZZLES 3/16"		NOZZLES 13/64"		NOZZLES 7/32"	
		L/H	R(m)	L/H	R(m)	L/H	R(m)	L/H (+)	R(m)	L/H	R(m)	L/H	R(m)	L/H	R(m)	L/H	R(m)
ONE NOZZLE, PLUG AND VANE TO HIGH RANGE	2.41	466	12.3	609	12.9	772	13.5	945	14.2	1140	14.7	1354	15.3	1601	15.9	1862	16.5
	2.76	497	12.6	652	13.6	827	14.3	1011	15.2	1220	15.8	1449	16.2	1715	16.6	1999	17.2
	3.10	527	12.8	693	13.7	877	14.5	1072	15.4	1295	16.0	1540	16.5	1817	17.1	2124	17.7
	3.45	556	13.0	731	13.9	924	14.6	1131	15.5	1365	16.2	1626	16.8	1919	17.4	2248	18.1
	3.79	584	13.1	768	14.0	970	14.8	1186	15.7	1431	16.3	1708	16.9	2010	17.7	2362	18.4
	4.14	609	13.3	802	14.2	1013	14.9	1238	15.8	1492	16.5	1783	17.1	2101	17.8	2442	18.7
	4.48	634	13.4	836	14.3	1056	15.1	1290	16.0	1551	16.6	1858	17.2	2180	18.0	2521	18.9
	4.83	659	13.6	868	14.5	1097	15.2	1340	16.2	1610	16.8	1931	17.4	2260	18.1	2589	19.1
	5.17	681	13.7	899	14.6	1136	15.4	1388	16.3	1667	16.9	1999	17.5	2328	18.3	2657	19.2
	5.52	704	13.9	929	14.8	1174	15.5	1431	16.5	1722	17.1	2065	17.7	2385	18.4	2725	19.4

Data obtained under ideal test conditions. It can be affected by wind, bad hydraulic conditions or other adverse factors.
Highest point of the jet above the nozzle: 2.5 m (using standard nozzle 11 / 64 " and a pressure of 3.45 Bar)
Throw radius jets achieved with the 0.9m lift. Shaded areas not recommended.
(*) Standard Nozzle.

L/H: Liters Per Minute
R(m): Throw Radius (meter)

Due to the large number of possible combinations of nozzles, only the most common ones are represented.
To find information relating to other combinations, please advise factory.

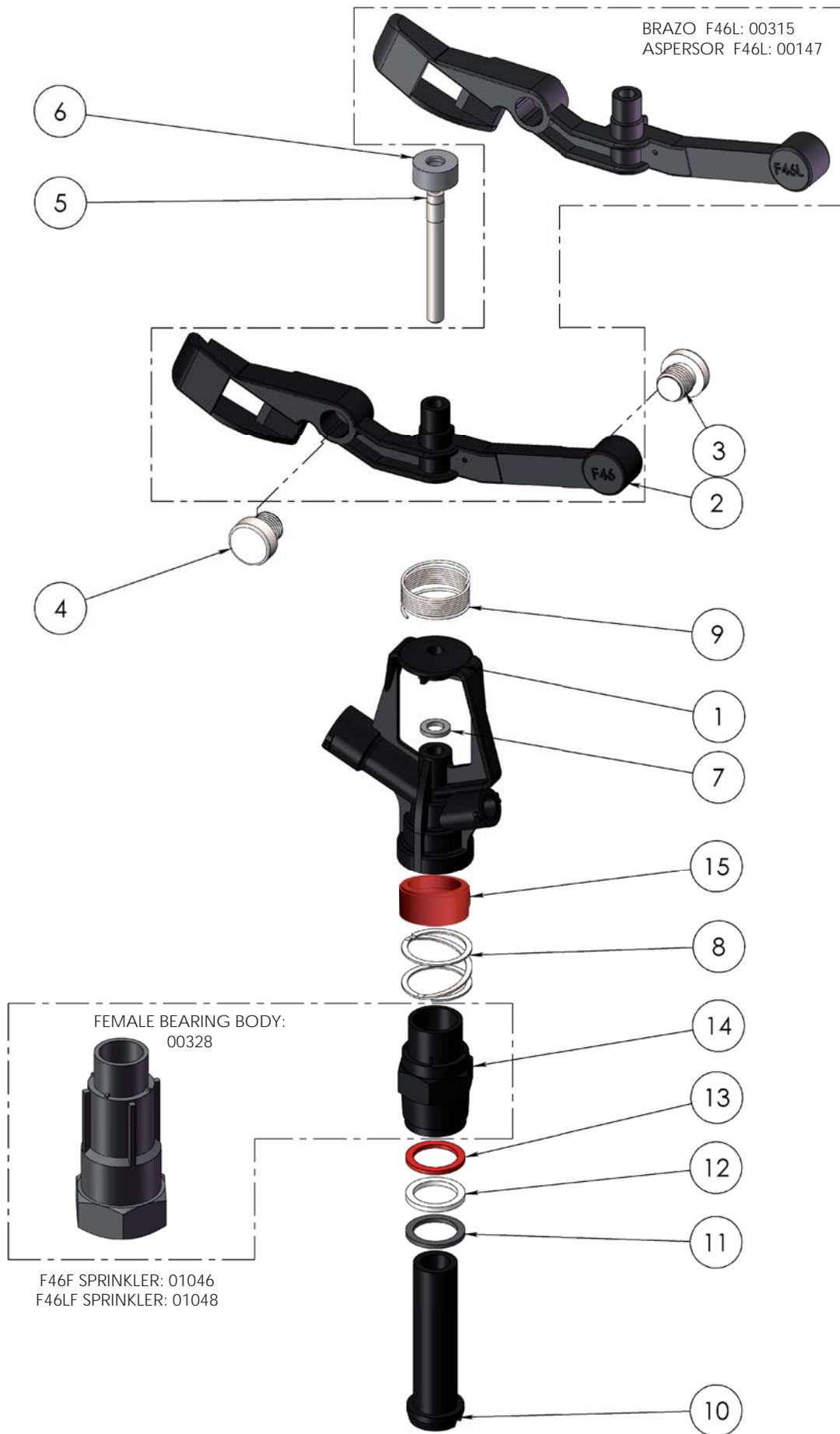
F46L F46

WARRANTY AND EXCLUSIONS

The manufacturer guarantees its products for direct customer against any defects in materials or manufacture for a period of two years from the original date of purchase, only when the products have been used under normal operating conditions. The manufacturer assumes no responsibility for installation, removal or repairs carried out by unauthorised personnel. The manufacturer's liability under this warranty is limited to the replacement or repair of defective parts and the manufacturer does not accept responsibility for damages to crops or any other consequential damages deriving from defects in the products covered by this warranty.

THE PRESENT WARRANTY SUPERCEDES AND VOIDS ALL OTHER WARRANTIES, WHETHER EXPRESS OR IMPLIED, INCLUDING THOSE OF MERCHANTABILITY AND FITNESS FOR PARTICULAR PURPOSES OR ANY OTHER ATTRIBUTING LIABILITY TO THE MANUFACTURER.

No agent, employee or representative of the manufacturer is authorised to void, alter or add to the conditions contained in this warranty, nor to take responsibility for, nor to make guarantees not specified herein.



COMPONENT NUMBER	CODE	DESCRIPTION	MATERIAL	QUANTITY
1	00310	F46 Sprinkler Body	POM	1
2	00311	F46 Sprinkler Arm	POM	1
3	00316	Back Counterweight	ZAMAK	1
4	00314	Front Counterweight	ZAMAK	1
5	06163	Fulcrum Pin	Stainless Steel	1
6	06161	Swing Arm Cap	PE	1
7	06162	Swing Arm Support Washer	NBR	1
8	00018	Bearing Spring	Stainless Steel	1
9	06183	3/4" Series Arm Spring	Stainless Steel	1
10	00313	Bearing Pin F46	POM	1
11	07459	Bearing Lower Washer	NBR	1
12	06736	Bearing Intermediate Washer	High Density PE	1
13	00252	Bearing Upper Washer	Anti Hydrolisis PU	1
14	00312	F46 Bearing Body	POM	1
15	00256	Bearing Body Lock	High Density PE	1

Notes

Process/Manufacturer Unirain	Size A3	Material	Code 00146
Assembly	Scale 1: 2	Name F46 Sprinkler	
PRIVATE AND CONFIDENTIAL THE INFORMATION CONTAINED ON THIS PLAN IS FOR UNIRAIN USE ONLY. FORBIDDEN CHANGE OR AMENDMENT OF VALUES OF THE PLAN WITHOUT A CONSENT IN WRITING.		21/05/09 E.G.B.	