

Unirain F44 - F44F

Full Circle Impact Sprinkler Low and Medium flow Plastic



Application

For general agricultural use on movable or fixed solid sets. This model is very suitable where working conditions are specially hard for plastic sprinklers. Balanced and strong sprinkler; Its swing arm is made of a material different from the body and the bearing, which, along with the counterweights, provides homogeneous and smooth circular movement.

Advantages

- Very strong sprinkler, reinforcing ribs on the body, a fibreglass added polyamide arm and bearings made of a mixture of acetal resins turning on the stainless steel pin.
- Sand-proof bearing set.
- Can be assembled with one or two nozzles. Sprinkler body adapted to two different model nozzle models: 3Q Bayonet & thread nozzle.
- This model allows using three different type of vane to achieve the desired coverage and spray balance according to the available system pressure.

Technical specifications

- Full circle impact sprinkler.
- Male or female(F44F) 3/4" base thread.
- Dual nozzle, main and secondary nozzle.
- 23° nozzle trajectory angle.
- Pressure range: 1,38 - 5,52 Bar.
- Nozzle range: 1/8" (3,18mm) - 7/32" (5,56mm).
- Acetal resin body and bearing. Polyamide fibreglass arm.
- Protective treatment against UV radiation.
- Fulcrum pin and springs made of stainless steel.
- Expanded fulcrum pin upper end diameter for a better fitting into the sprinkler body.
- Color-coded anti abrasive acetal resin nozzles carved in millimetres and inches for clear identification.
- Backturn lock between the sprinkler body and the compression spring,
- Acetal resins bearing in arm.



	Pressure (bar)	Nozzles	Vanes
HIGH	4.14	3PRN 6 3FCN	30 V
MEDIUM	2.76	3PRN 6 3FCN	WITHOUT VANE
LOW	2.10	3PRN	30RV
VERY LOW	1.38	3PRN	30BV



F44	PRESSURE (Bar)	NOZZLES 1/8" + 3/32" L/H R(m)		NOZZLES 9/64" + 3/32" L/H R(m)		NOZZLES 5/32" + 3/32" L/H (+) R(m)		NOZZLES 11/64" + 3/32" L/H R(m)		NOZZLES 3/16" + 3/32" L/H R(m)		NOZZLES 3/16" + 1/8" L/H R(m)		NOZZLES 13/64" + 1/8" L/H R(m)		NOZZLES 7/32" + 1/8" L/H R(m)	
		TWO NOZZLES	1.38	723	11.6	849	11.9	979	12.4	1126	12.8	1285	13.2	1511	13.2	1697	13.7
	1.72	806	11.9	949	12.3	1097	13.0	1261	13.4	1433	13.9	1681	13.9	1885	14.3	2101	14.8
	2.07	886	12.3	1040	13.0	1199	13.6	1379	14.0	1574	14.5	1851	14.5	2078	14.9	2317	15.4
	2.41	961	12.6	1124	13.3	1297	14.0	1492	14.5	1706	14.9	2005	14.9	2255	15.4	2521	15.8
	2.76	1029	12.8	1201	13.6	1388	14.3	1597	14.8	1824	15.2	2149	15.2	2419	15.7	2703	16.2
	3.10	1092	13.0	1274	13.7	1472	14.5	1694	15.1	1937	15.5	2283	15.5	2566	16.0	2873	16.5
	3.45	1151	13.1	1342	13.9	1549	14.6	1787	15.2	2044	15.8	2407	15.8	2703	16.3	3032	16.8
	3.79	1208	13.3	1408	14.0	1624	14.8	1874	15.4	2146	16.0	2521	16.0	2839	16.6	3180	17.1
	4.14	1263	13.4	1472	14.2	1697	14.9	1953	15.5	2239	16.2	2635	16.2	2953	16.8	3293	17.2
	4.48	1315	13.6	1533	14.3	1767	15.1	2028	15.7	2333	16.3	2748	16.3	3066	16.9	3407	17.4
	4.83	1365	13.7	1590	14.5	1835	15.2	2101	15.8	2421	16.5	2839	16.5	3180	17.1	3509	17.5
	5.17	1413	13.9	1647	14.6	1901	15.4	2171	16.0	2503	16.6	2930	16.6	3271	17.2	3611	17.7
	5.52	1458	14.0	1701	14.8	1965	15.5	2242	16.2	2580	16.8	3009	16.8	3361	17.4	3702	17.8

F44P	PRESSURE (Bar)	NOZZLES 1/8" L/H R(m)		NOZZLES 9/64" L/H R(m)		NOZZLES 5/32" L/H (+) R(m)		NOZZLES 11/64" L/H R(m)		NOZZLES 3/16" L/H R(m)		NOZZLES 13/64" L/H R(m)		NOZZLES 7/32" L/H R(m)	
		ONE NOZZLE AND PLUG	1.38	458	11.6	584	11.9	714	12.4	861	12.8	1020	13.2	1205	13.7
	1.72	511	11.9	654	12.3	799	13.0	963	13.4	1136	13.9	1340	14.3	1556	14.8
	2.07	561	12.3	715	13.0	874	13.6	1054	14.0	1249	14.5	1476	14.9	1715	15.4
	2.41	609	12.6	772	13.3	945	14.0	1140	14.5	1354	14.9	1601	15.4	1862	15.8
	2.76	652	12.8	827	13.6	1011	14.3	1220	14.8	1449	15.2	1715	15.7	1999	16.2
	3.10	693	13.0	877	13.7	1072	14.5	1295	15.1	1540	15.5	1817	16.0	2124	16.5
	3.45	731	13.1	924	13.9	1131	14.6	1365	15.2	1626	15.8	1919	16.3	2248	16.8
	3.79	768	13.3	970	14.0	1186	14.8	1431	15.4	1708	16.0	2010	16.6	2362	17.1
	4.14	802	13.4	1013	14.2	1238	14.9	1492	15.5	1783	16.2	2101	16.8	2442	17.2
	4.48	836	13.6	1056	14.3	1290	15.1	1551	15.7	1858	16.3	2180	16.9	2521	17.4
	4.83	868	13.7	1097	14.5	1340	15.2	1610	15.8	1931	16.5	2260	17.1	2589	17.5
	5.17	899	13.9	1136	14.6	1388	15.4	1667	16.0	1999	16.6	2328	17.2	2657	17.7
	5.52	929	14.0	1174	14.8	1431	15.5	1722	16.2	2065	16.8	2385	17.4	2725	17.8

F44V	PRESSURE (Bar)	NOZZLES 1/8" + 3/32" L/H R(m)		NOZZLES 9/64" + 3/32" L/H R(m)		NOZZLES 5/32" + 3/32" L/H (+) R(m)		NOZZLES 11/64" + 3/32" L/H R(m)		NOZZLES 3/16" + 3/32" L/H R(m)		NOZZLES 3/16" + 1/8" L/H R(m)		NOZZLES 13/64" + 1/8" L/H R(m)		NOZZLES 7/32" + 1/8" L/H R(m)	
		TWO NOZZLES, AND VANE TO HIGH RANGE	2.41	961	12.9	1124	13.5	1297	14.2	1492	14.7	1706	15.3	2005	15.3	2255	15.9
	2.76	1029	13.4	1201	14.2	1388	15.1	1597	15.5	1824	16.0	2149	16.0	2419	16.5	2703	16.9
	3.10	1092	13.6	1274	14.3	1472	15.2	1694	15.8	1937	16.3	2283	16.3	2566	16.8	2873	17.4
	3.45	1151	13.7	1342	14.5	1549	15.4	1787	16.0	2044	16.5	2407	16.5	2703	17.1	3032	17.8
	3.79	1208	13.9	1408	14.6	1624	15.5	1874	16.2	2146	16.6	2521	16.6	2839	17.4	3180	18.1
	4.14	1263	14.0	1472	14.8	1697	15.7	1953	16.3	2239	16.8	2635	16.8	2953	17.5	3293	18.4
	4.48	1315	14.2	1533	14.9	1767	15.8	2028	16.5	2333	16.9	2748	16.9	3066	17.7	3407	18.6
	4.83	1365	14.3	1590	15.1	1835	16.0	2101	16.6	2421	17.1	2839	17.1	3180	17.8	3509	18.7
	5.17	1413	14.5	1647	15.2	1901	16.2	2171	16.8	2503	17.2	2930	17.2	3271	18.0	3611	18.9
	5.52	1458	14.6	1701	15.4	1965	16.3	2242	16.9	2580	17.4	3009	17.4	3361	18.1	3702	19.1

F44PV	PRESSURE (Bar)	NOZZLES 1/8" L/H R(m)		NOZZLES 9/64" L/H R(m)		NOZZLES 5/32" L/H (+) R(m)		NOZZLES 11/64" L/H R(m)		NOZZLES 3/16" L/H R(m)		NOZZLES 13/64" L/H R(m)		NOZZLES 7/32" L/H R(m)	
		ONE NOZZLE, PLUG AND VANE TO HIGH RANGE	2.41	609	12.9	772	13.5	945	14.2	1140	14.7	1354	15.3	1601	15.9
	2.76	652	13.6	827	14.3	1011	15.2	1220	15.8	1449	16.2	1715	16.6	1999	17.2
	3.10	693	13.7	877	14.5	1072	15.4	1295	16.0	1540	16.5	1817	17.1	2124	17.7
	3.45	731	13.9	924	14.6	1131	15.5	1365	16.2	1626	16.8	1919	17.4	2248	18.1
	3.79	768	14.0	970	14.8	1186	15.7	1431	16.3	1708	16.9	2010	17.7	2362	18.4
	4.14	802	14.2	1013	14.9	1238	15.8	1492	16.5	1783	17.1	2101	17.8	2442	18.7
	4.48	836	14.3	1056	15.1	1290	16.0	1551	16.6	1858	17.2	2180	18.0	2521	18.9
	4.83	868	14.5	1097	15.2	1340	16.2	1610	16.8	1931	17.4	2260	18.1	2589	19.1
	5.17	899	14.6	1136	15.4	1388	16.3	1667	16.9	1999	17.5	2328	18.3	2657	19.2
	5.52	929	14.8	1174	15.5	1431	16.5	1722	17.1	2065	17.7	2385	18.4	2725	19.4

Data obtained under ideal test conditions. It can be affected by wind, bad hydraulic conditions or other adverse factors. Highest point of the jet above the nozzle: 2.5 m (using standard nozzle 11 / 64 " and a pressure of 3.45 Bar) Throw radius jets achieved with the 0.9m lift. Shaded areas not recommended. (*) Standard Nozzle.

Due to the large number of possible combinations of nozzles, only the most common ones are represented. To find information relating to other combinations , please advise factory.

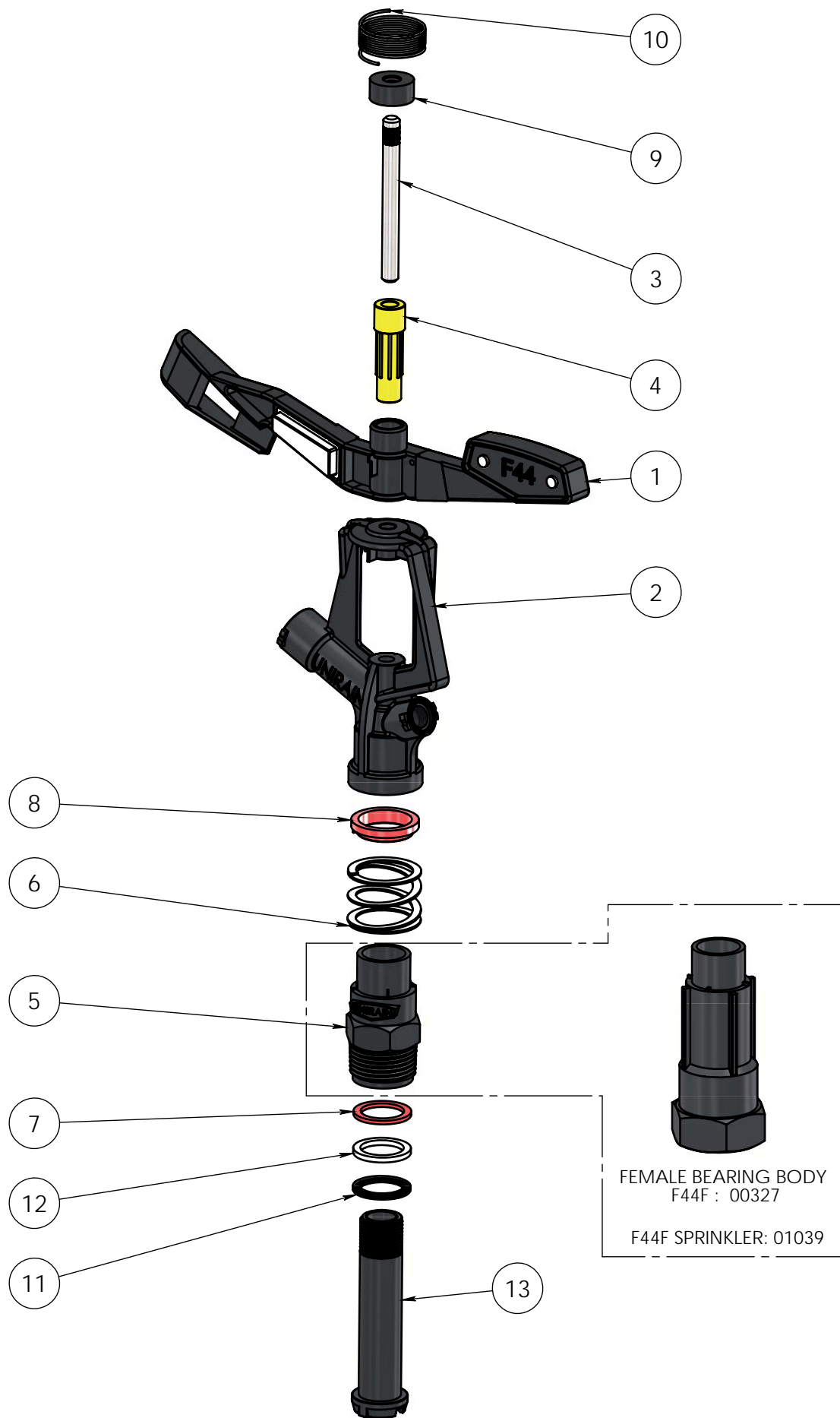
L/H: Liters Per Minute
R(m): Throw Radius (meter)

WARRANTY AND EXCLUSIONS

The manufacturer guarantees its products for direct customer against any defects in materials or manufacture for a period of two years from the original date of purchase, only when the products have been used under normal operating conditions. The manufacturer assumes no responsibility for installation, removal or repairs carried out by unauthorised personnel. The manufacturer's liability under this warranty is limited to the replacement or repair of defective parts and the manufacturer does not accept responsibility for damages to crops or any other consequential damages deriving from defects in the products covered by this warranty.


THE PRESENT WARRANTY SUPERCEDES AND VOIDS ALL OTHER WARRANTIES, WHETHER EXPRESS OR IMPLIED, INCLUDING THOSE OF MERCHANTABILITY AND FITNESS FOR PARTICULAR PURPOSES OR ANY OTHER ATTRIBUTING LIABILITY TO THE MANUFACTURER.

No agent, employee or representative of the manufacturer is authorised to void, alter or add to the conditions contained in this warranty, nor to take responsibility for, nor to make guarantees not specified herein.



COMPONENT NUMBER	SPARE CODE	DESCRIPTION	MATERIAL	QUANTY
1	06600UNI	Sprinkler Arm F44 (With counterweight)	PA6 + FV / Zamak	1
2	06513UNI	Sprinkler Body F44	POM	1
3	06519	Swing Arm Pin F44-F4444-F4444L	Stainless Steel	1
4	06636	Swing Arm Bearing F44	POM	1
5	06518UNI	Bearing body F44 (male)	POM	1
6	06151	Bearing Flat Spring F40, F44, P35	Stainless Steel	1
7	00252	Bearing Upper Washer	Anti Hydrolisis PU	1
8	00255	Bearing Spring's Protector Lock (Thin)	High Density PE	1
9	06161	Arm Hat Sprinkler 3/4"	PE	1
10	06183T40	Arm Spring Sprinkler 3/4" Tension 40g	Stainless Steel	1
11	07459	Bearing Lower Washer	NBR	1
12	06736	Bearing Intermediate Washer	High Density PE	1
13	06517	Bearing Shaft P45 / F44	POM	1

Notes

Process/Manufacturer	Size	Material	Code
Unirain	A3		00094UNI
Assembly	Scale	Name	
	1:2	F44 UNIRAIN Sprinkler	
PRIVATE AND CONFIDENTIAL THE INFORMATION CONTAINED ON THIS PLAN IS FOR UNIRAIN USE ONLY. FORBIDDEN CHANGE OR AMENDMENT OF VALUES OF THE PLAN WITHOUT A CONSENT IN WRITING.	20/05/21		
	R.M.J.		