

UNIRAIN ARV-Automatic

Automatic Air Valve

Available with in 1" & 3/4" thread



Units Conversion	
FLOW	PRESSURE
m ³ / h (cubic metres per hour)	mWa (metres of water column)
l / h (litres per hour)	PSI (pounds per square inch)
GPM (gallons per minute)	
CFM (cubic feet per minute)	
1 CFM = 1.699 m³ / h	1 PSI = 0.70307 mWa
1 GPM = 227.1192 l / h	

Application

Designed to efficiently extract air trapped in pipes, filters, tanks and other places where unwanted air might cause performance problems.

The air release valves are located at the outlet of pipes whose slope varies according to the hydraulic gradient, in areas where pipes are located above ground level, in long pipes with uniform slope, at the input of measuring instruments, the output of reducing valves, in diameter reductions, pumps, filtration systems, and on both sides of a subterranean crossing road.

For correct operation, the valve should always be in a vertical position.

It is recommended to install a manual ball valve under the ARV, in order to make maintenance and repair operations easier without shutting the whole system*.

Advantages

- The valve has one seal, which expels both kinetic and residual air automatically, and this function is not affected by water pressure.
- Simple in design, with only 5 parts, it's easy to disassemble for maintenance and cleaning when needed.
- Its exclusive Y-shaped discharge outlet design allows a much greater air flow than other valves of this type, in both the discharge and the intake phases.
- Owing to a perfect fit, the valve is totally sealed, even at very low pressures.
- The body is red, making it easily visible.

Technical specifications

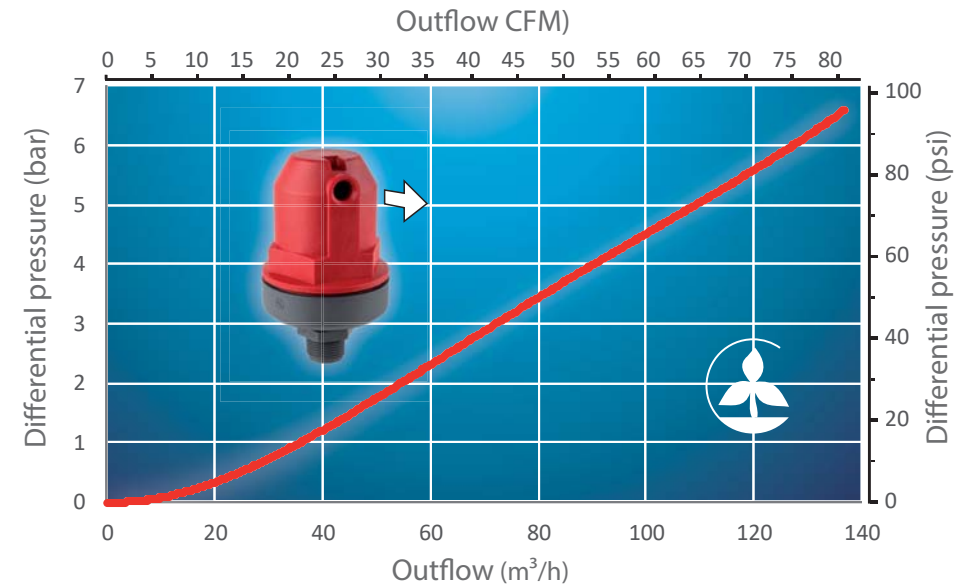
- Continuous and automatic operation.
- At least 136 m³/h (80 CFM) of air released without shutting the valve in the absence of water
- Released air volume is at least 35 m³/h (20.6 CFM) at 1bar (14.5 PSI).
- Maximum working pressure 16 bar (232 PSI).
- Body and base made of fibreglass-reinforced polyamide.
- Treated for protection from UV radiation.
- Base available in 1" and 3/4" thread.
- Optional BSP or NPT thread.
- Filter included in the base.



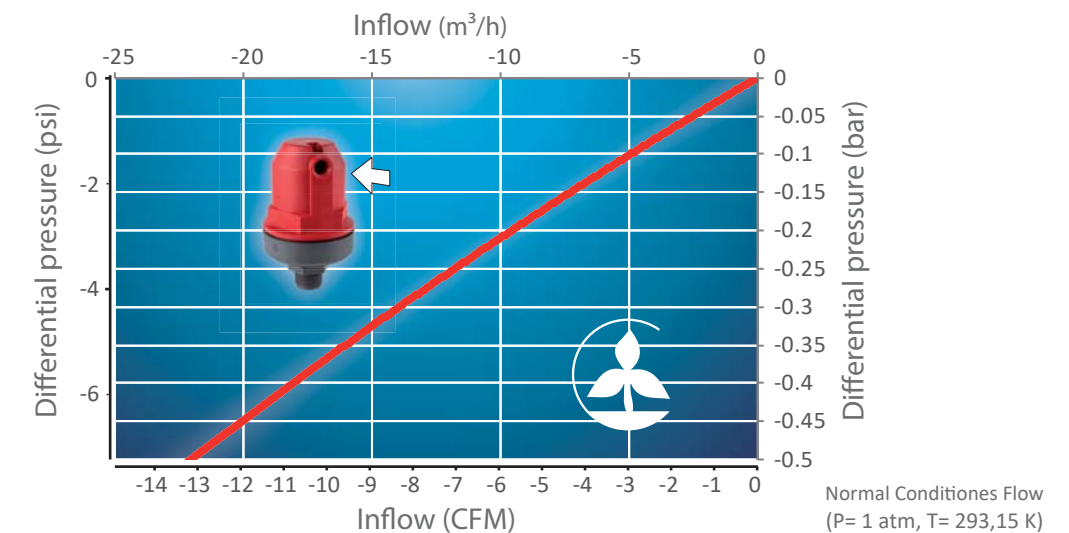
Performance

- **Extracts** air from small pipes as they fill. When water reaches the inside of the valve, the float rises and seals the discharge outlet.
- **Maintains** automatically and continuously its function of eliminating any residual air pockets reaching the valve, as the float immediately drops and the closure outlet is partly or totally opened. Water pressure does not interfere with this function.
- **Prevents** small pipes from collapsing. At the smallest decrease in pressure, the float drops and opens the seal allowing outside air to enter the pipe immediately.

Outflow



Inflow



*Normal conditions of use, service and maintenance.

This product has been tested at low pressure (0.5 bar) and high pressure (16 bar) with satisfactory results.

For correct operation, valves must undergo regular routine checks. The check should include the cleaning of the internal components and inspection of the seal conditions. For more detailed information about the use and maintenance of valves, please check the document called "Unirain ARV: INSTALLATION AND OPERATION MANUAL".

For specific uses, please consult the technical department.

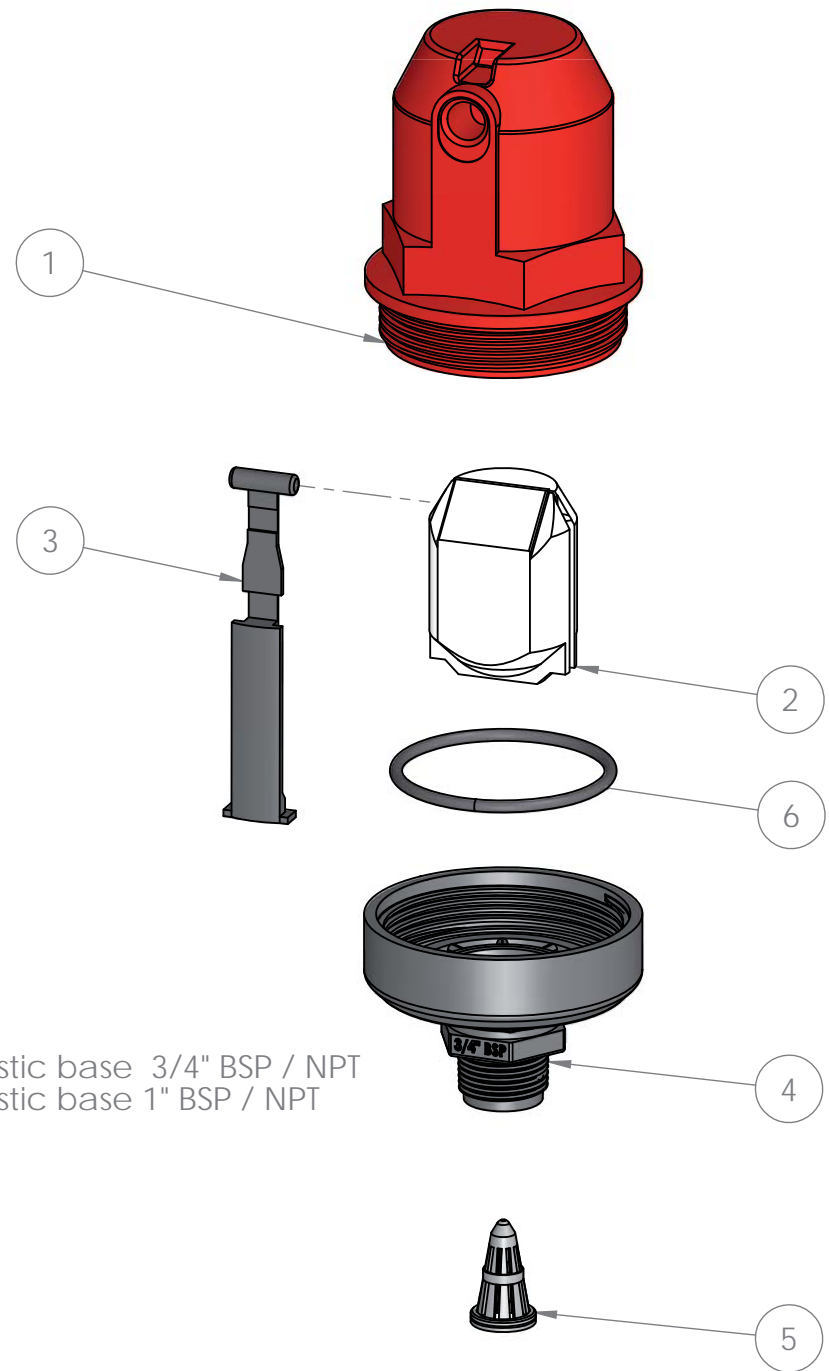
WARRANTY AND EXCLUSIONS

The manufacturer guarantees its products for direct customer against any defects in materials or manufacture for a period of two years from the original date of purchase, when the products have been used under normal operating and service conditions. The manufacturer assumes no liability for installation, removal or repairs carried out by unauthorised personnel. This warranty is limited to the replacement or repair of defective parts. The manufacturer does not accept liability for damage to crops or any other consequences damages deriving from defects in the products covered by this warranty.

THIS WARRANTY SUPERSEDES AND VOIDS ALL OTHER WARRANTIES, WHETHER EXPRESS OR IMPLIED, INCLUDING THOSE OF MERCHANTABILITY OR ANY OTHER ATTRIBUTING LIABILITY TO THE MANUFACTURER.

No agent, employee or representative of the manufacturer is authorised to change, alter or add to the conditions contained in this warranty or to assume liability or make guarantees not specified herein.

UNIRAIN S.A. reserves the right to amend any of the technical features of this product.



COMPONENT NUMBER	SPARE CODE	DESCRIPTION	MATERIAL	QUANTY
1	----	ARV-Automatic Valve Body	PA6 + Fiber Glass	1
2	----	ARV-Automatic Float	Expanded PP	1
3	01764	ARV-Automatic Seal	EPDM	1
4	----	3/4" BSP Valve Base	PA6 + Fiber Glass	1
5	01752	1"-3/4" Valve base filter	PP	1
6	01765ANC	NBR	1"-3/4" O-Ring	1

Notes

Process/Manufacturer UNIRAIN	Size A3	Material	Code
	Scale 1:2	Name ARV-Automatic	
PRIVATE AND CONFIDENTIAL THE INFORMATION CONTAINED ON THIS PLAN IS FOR UNIRAIN USE ONLY. FORBIDDEN CHANGE OR AMENDMENT OF VALUES OF THE PLAN WITHOUT A CONSENT IN WRITING.	20/05/21		
	P.M.M.		